

H C 0517-0543

THE
STORY
OF

BELLEVILLE



IN
PICTURES

Ontario Print, Belleville.



Chamber
of Commerce
and
City Hall

HC 0518

Acc 13281-44

PJOS

Brooklyn

975-5-5

HC 0579



QUEEN ALEXANDRA SCHOOL—ONE OF FOUR, NEW MODERN PUBLIC SCHOOLS

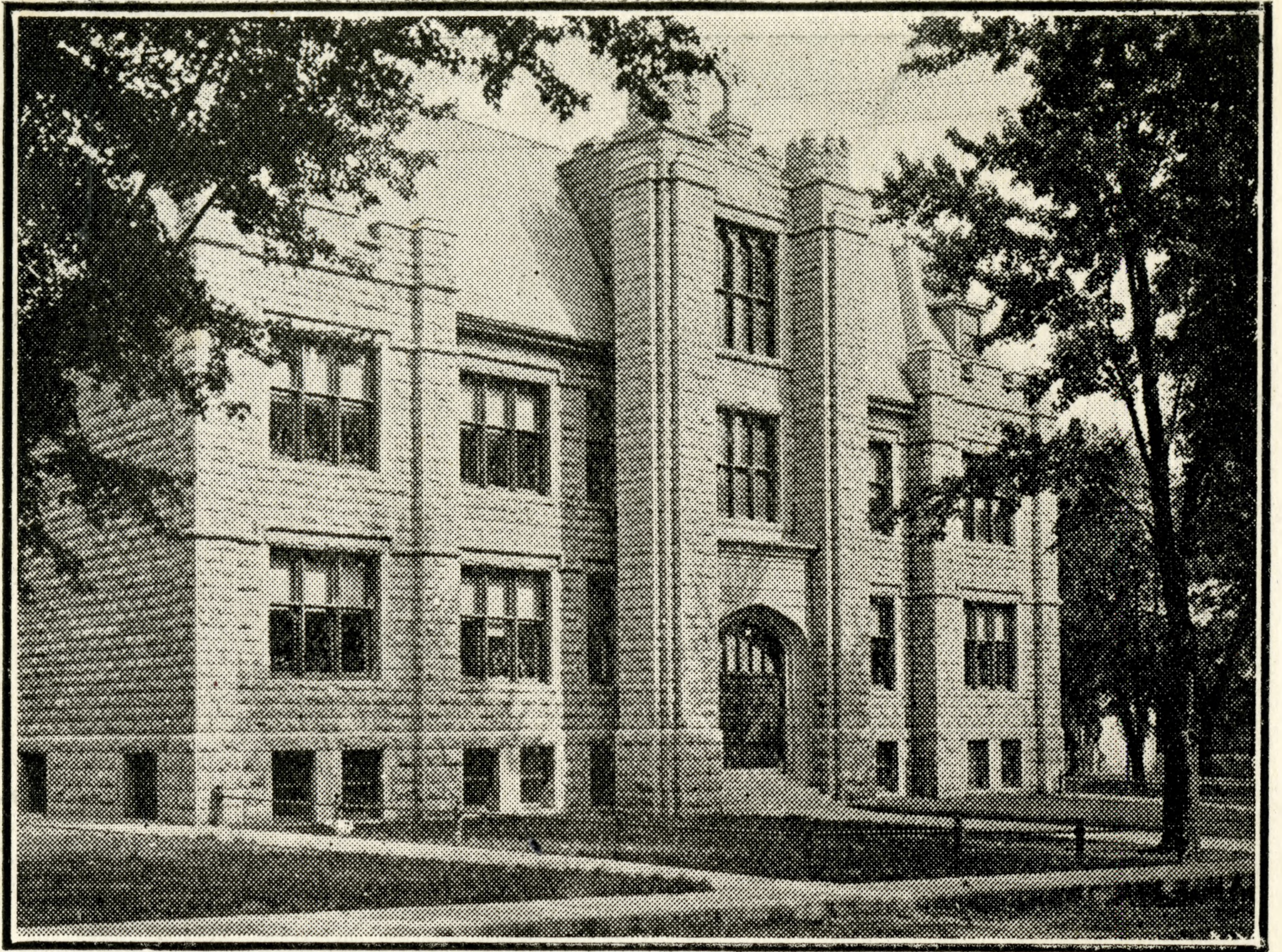
HC 0520



ONTARIO SCHOOL FOR THE DEAF—BEAUTIFUL NEW MAIN BUILDING—
ERECTED 1923.

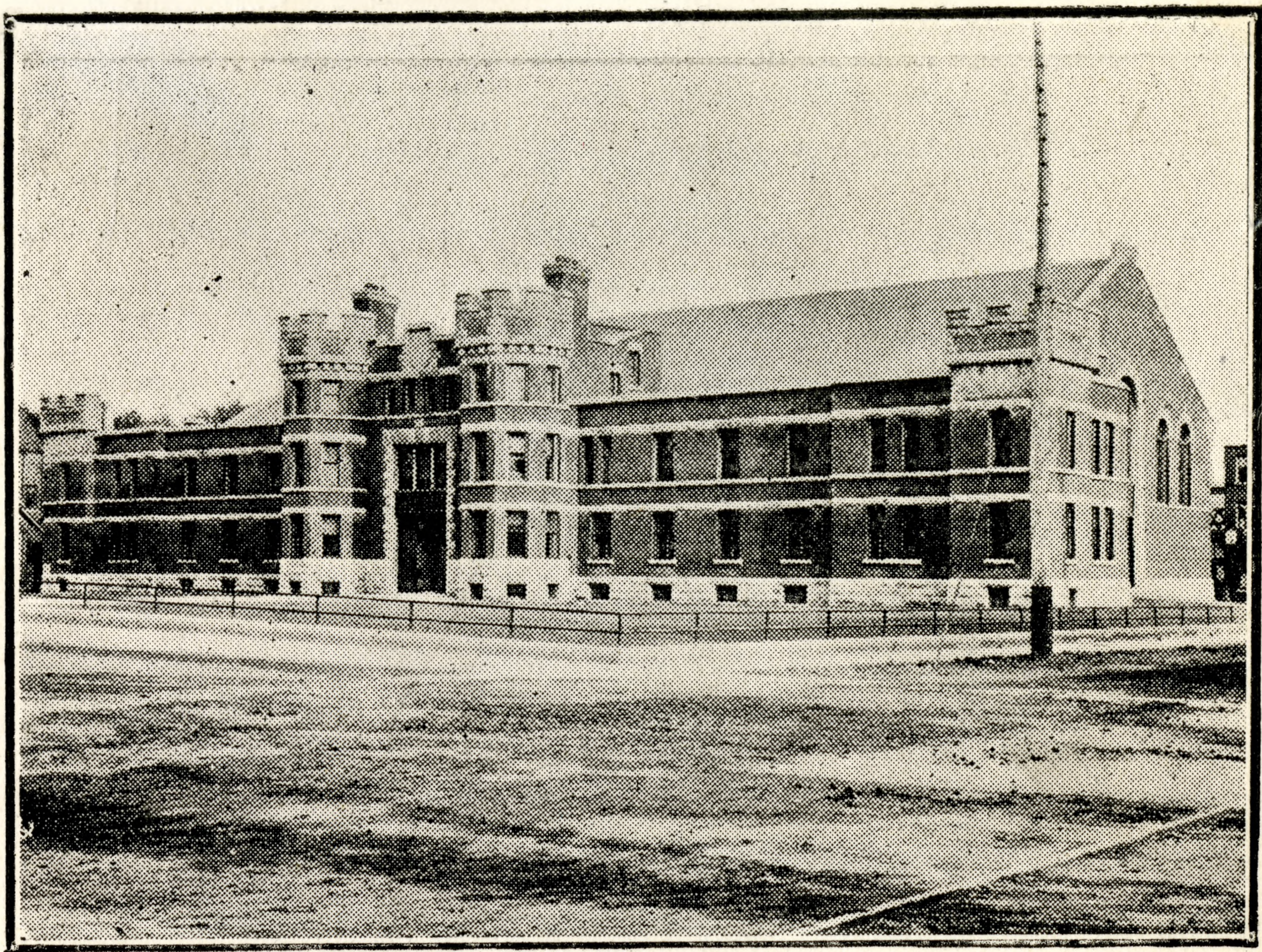
HC 0521

()



ST. MICHAEL'S ACADEMY, R. C. SEPARATE SCHOOL.

HC 0522



BELLEVILLE ARMOURIES.



PUBLIC LIBRARY, GIFT OF THE LATE SENATOR CORBY

HC 0523



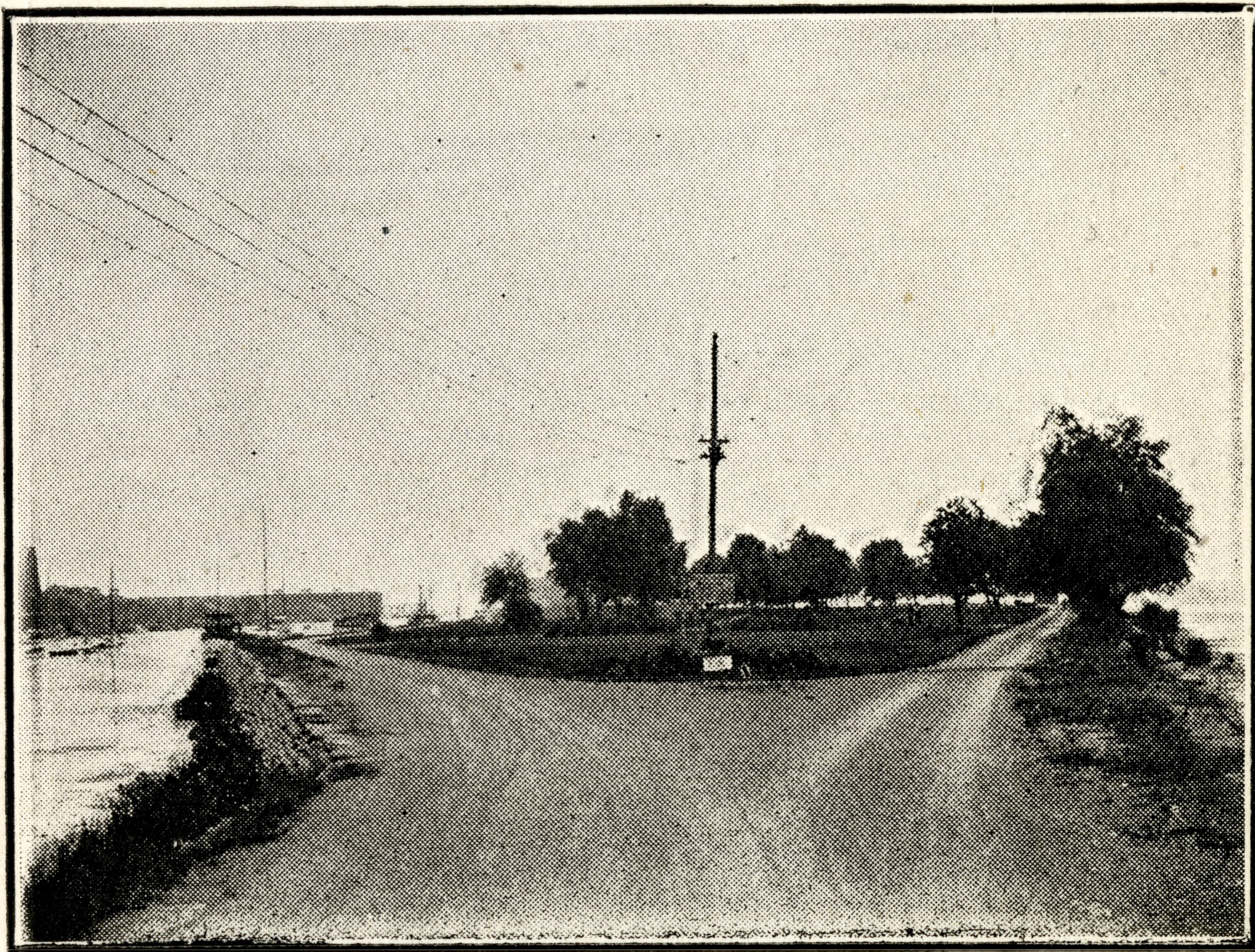
HOME FOR THE AGED. (COUNTY OF HASTINGS).

HC 0524

HC 0526



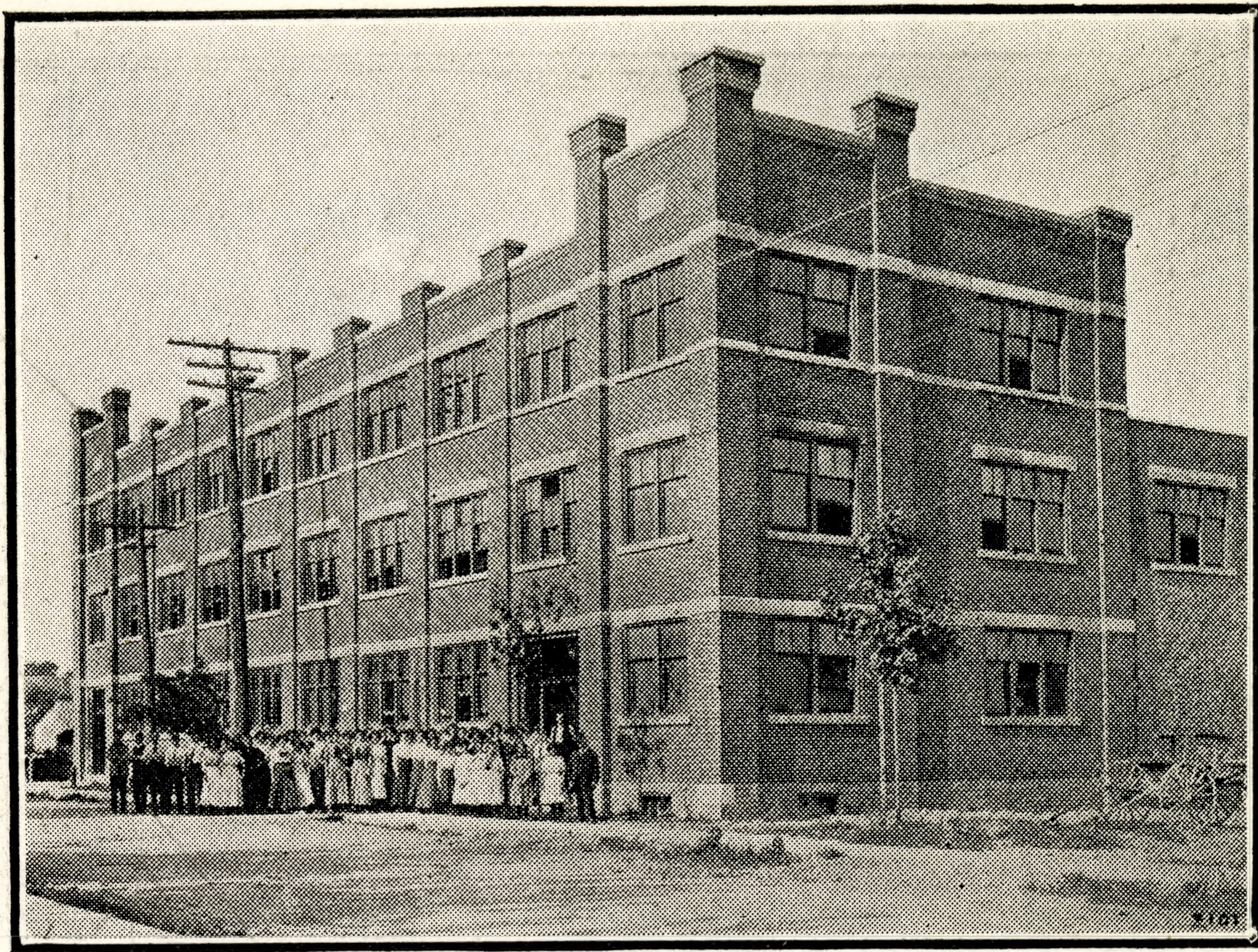
BELLEVILLE HARBOR AND VICTORIA PARK.



ENTRANCE TO VICTORIA PARK.

HC 0526

1fc 0527



DEACON SHIRT CO. FACTORY.

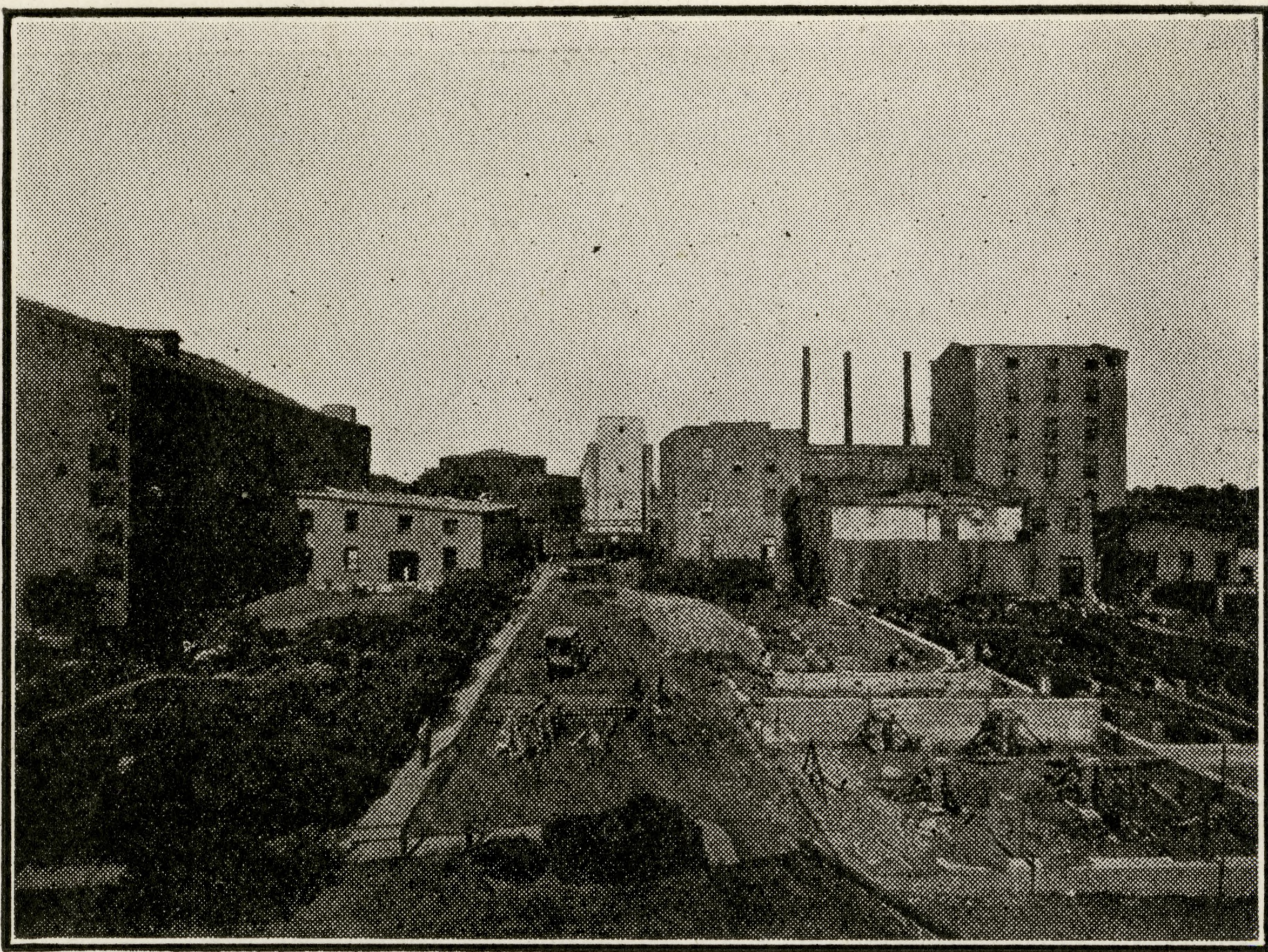


PLANT MARSH ENGINEERING WORKS.

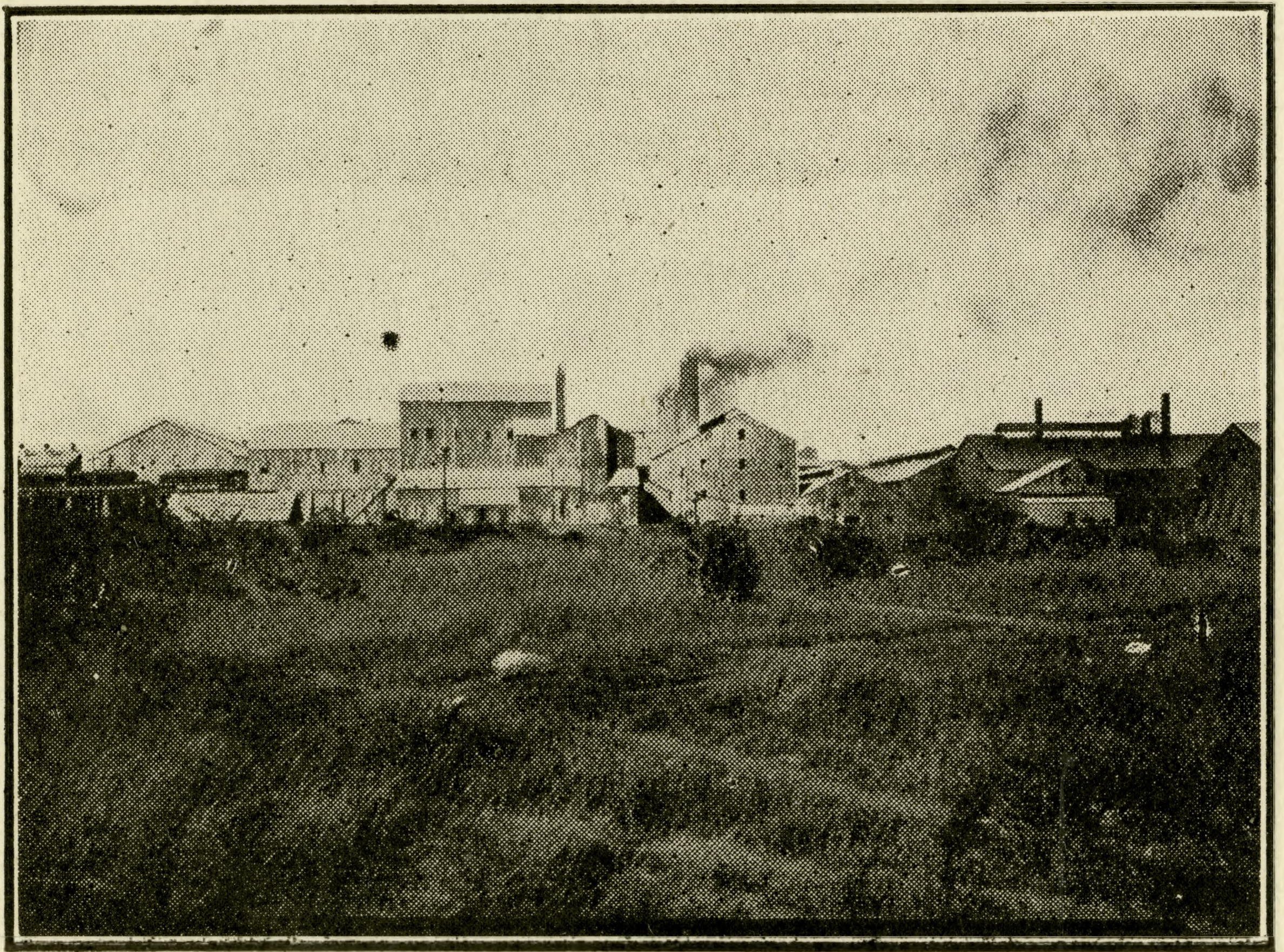
HC 0528

4C0529

975-55



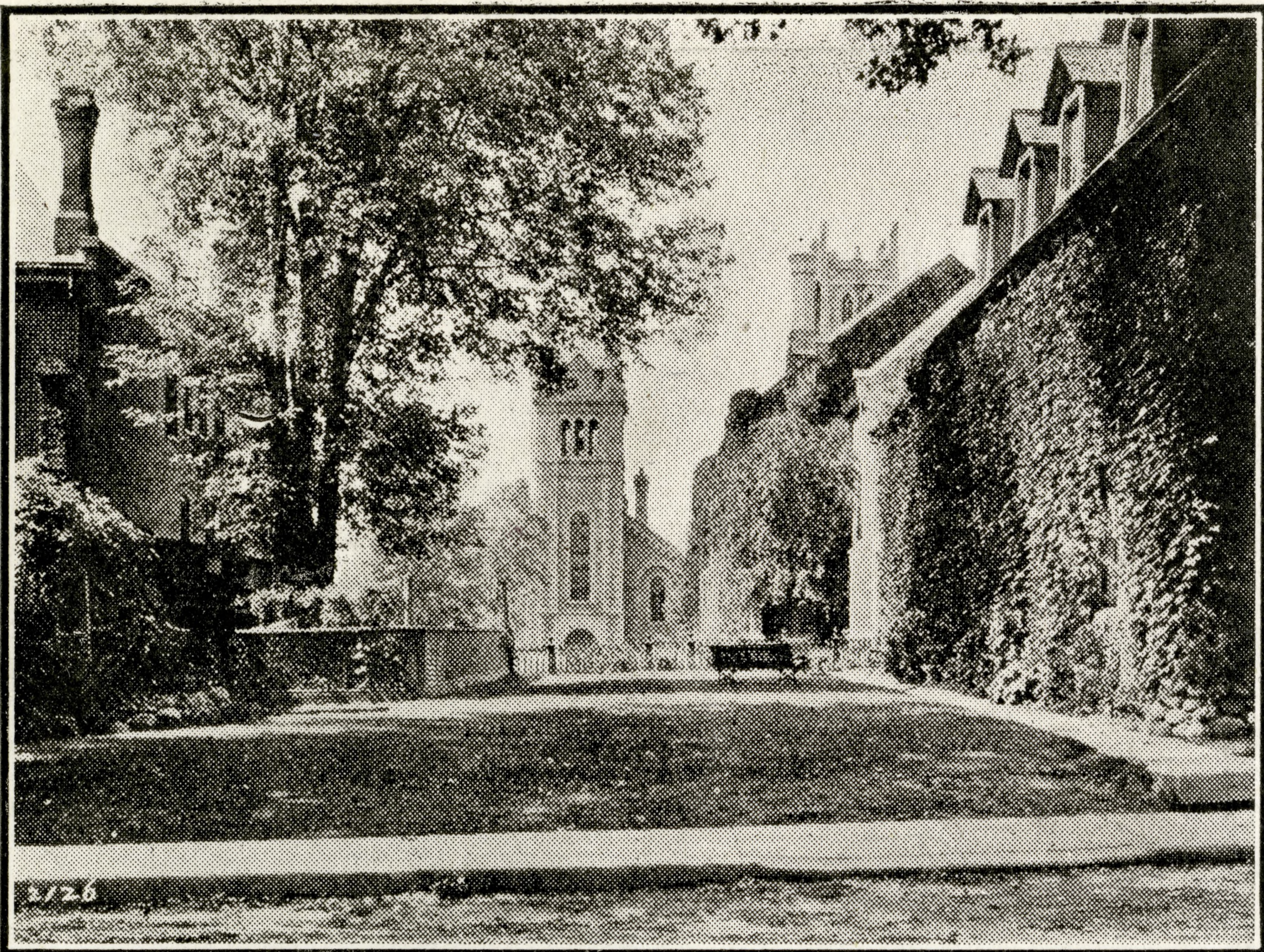
PLANT CANADIAN INDUSTRIAL ALCOHOL CO.



PLANT CANADA CEMENT CO.

H.C. 0530

P+C 0531



BRIDGE ST. METHODIST CHURCH (centre), ST. THOMAS' CHURCH, ANGLICAN (right).

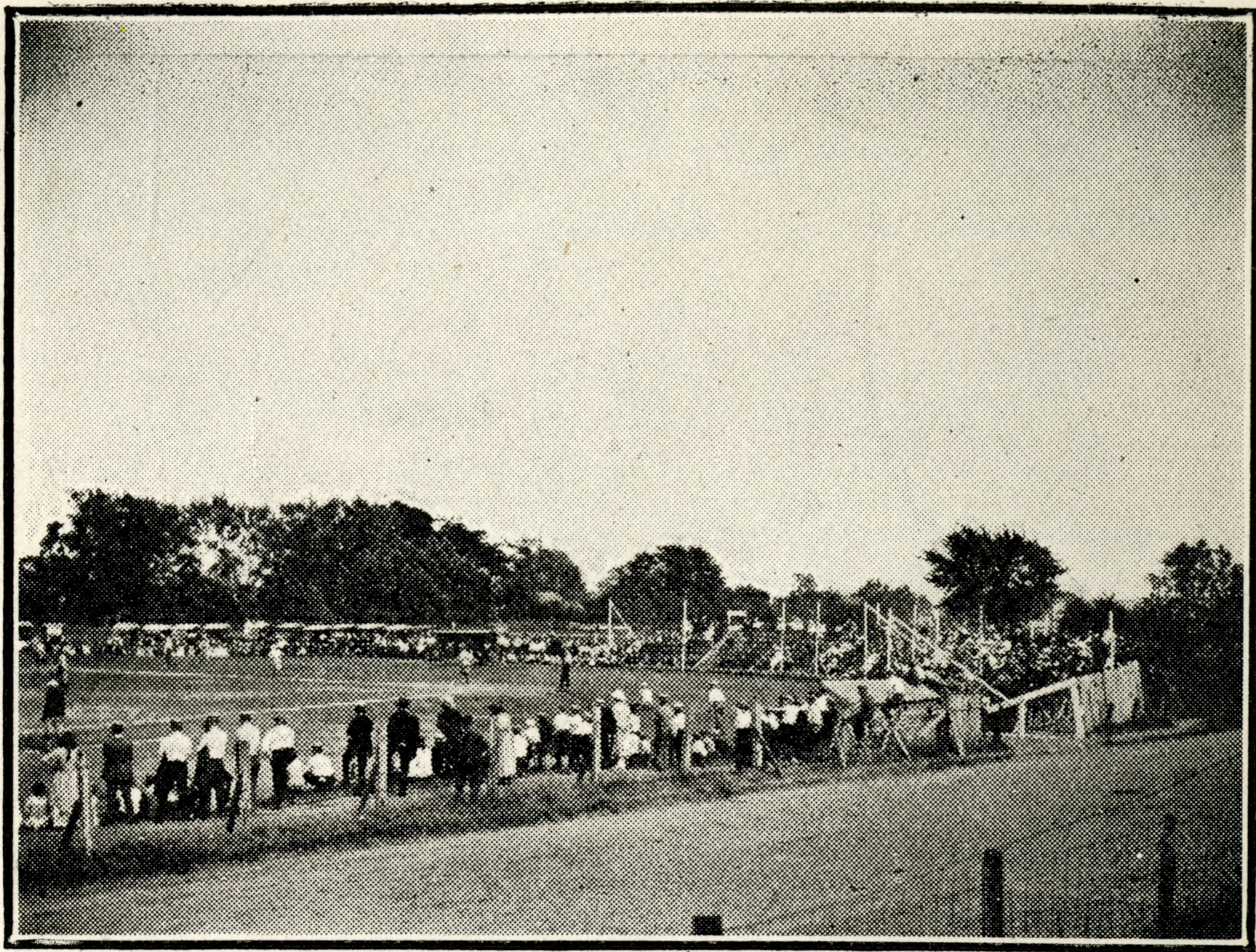


BELLEVILLE GENERAL HOSPITAL.

HC

0532

HC 0533



BELLEVILLE BASEBALL PARK.



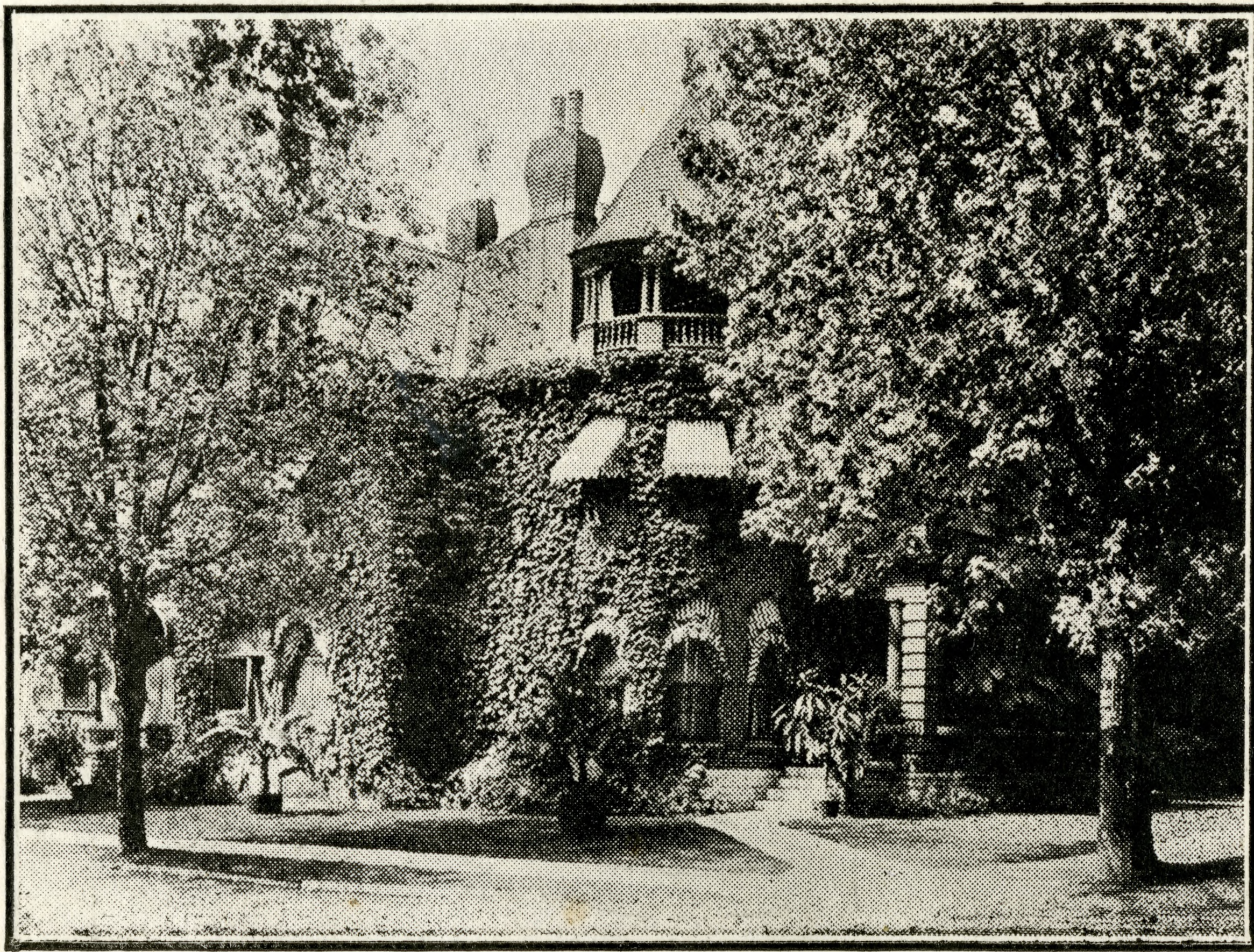
BELLEVILLE BOWLING GREEN.

HC 0534

HC 0535

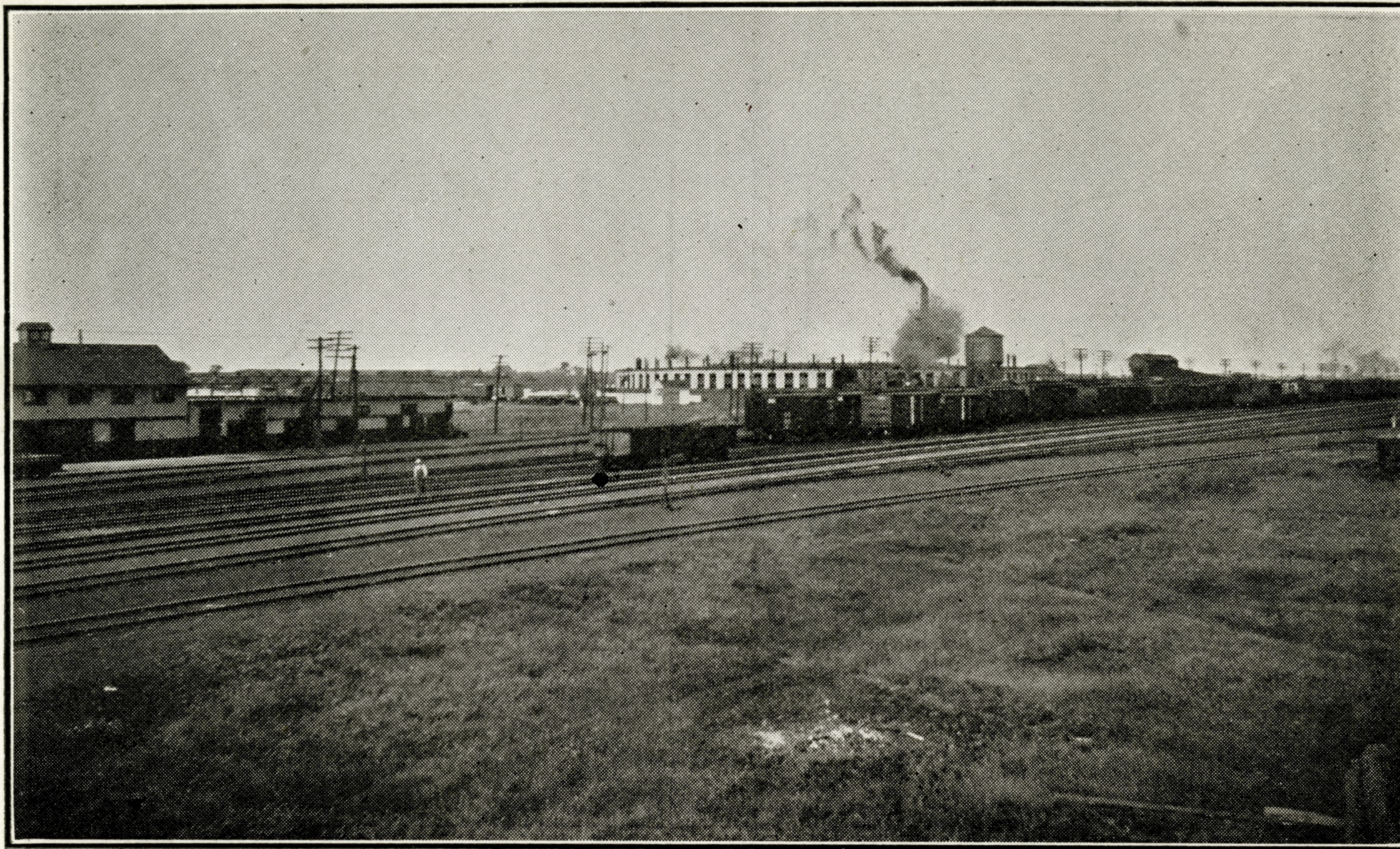


RESIDENCE LT.-COL. S. S. LAZIER.



RESIDENCE DR. G. H. STOBIE.

HC 0536



CANADIAN NATIONAL ROUND HOUSE (the largest in Canada) AND DIVISIONAL POINT

HC 0537

975-55

H.C. 0538



BELLEVILLE MARKET—THE SECOND LARGEST COUNTRY MARKET IN ONTARIO

HC 0539



BRIDGE ST. EAST—ONTARIO BUSINESS COLLEGE AND BANK OF MONTREAL AND
STANDARD BANK IN FOREGROUND.

HC 0540



CAMPBELL ST.—UNION BANK AND BANK OF COMMERCE IN FOREGROUND.
Y.M.C.A. IN LEFT BACKGROUND.



BELLEVILLE POST OFFICE (left) HOTEL QUINTE (right) BELLEVILLE CLUB (centre)

HC 0541

HC 0542



FRONT STREET—BELLEVILLE'S MAIN BUSINESS THOROUGHFARE.

Belleville

The Gateway to Central Ontario

Occupying a situation of remarkable natural beauty, where the turbulent Moira joins the placid Bay of Quinte, the City of Belleville holds a position of surpassing commercial advantage. The trunk lines of three transcontinental railways pass through the corporation bounds with radiating lines to Ottawa, Peterborough, Lindsay, Madoc, Maynooth and Picton and deep-water navigation to all ports on the Great Lakes and the Murray and Trent Valley canals. A wealthy, agricultural, fruit-growing and dairying district surrounds with important mining and lumbering interests to the north.

Belleville, because of its strategic position, about midway between Toronto, Hamilton, and London, the three largest cities of western Ontario, and Ottawa, Montreal and Quebec, the three greatest centres of population in eastern Canada, is an ideal location for manufacturing enterprises. No less than **fourteen new industries, six of them American branches**, have chosen Belleville as their home in the past 18 months. Low-cost power, dependable labor, moderate living costs, exceptional educational advantages and congenial social surroundings were other attractions.

Population (Dominion census, 1921) 12,206. Increase, 1911-1921, was 23 p.c. Fifty varied industries.

Learn more about Belleville's beauties, superb attractions and unrivalled advantages by writing to-day to

J. O. HERITY

Commissioner of Industries and Manager of the Chamber of Commerce.

BELLEVILLE, ONTARIO.