



ICE CUTTING

MANLY MAC DONALD, R.C.A.

VOLUME 2, NUMBER 1

JANUARY, 1956

OUR VALLEY

WITH THE COOPERATION OF
THE MOURA RIVER COMMISSION AGENCY

DEPARTMENT OF PLANNING AND DEVELOPMENT



MESSAGE

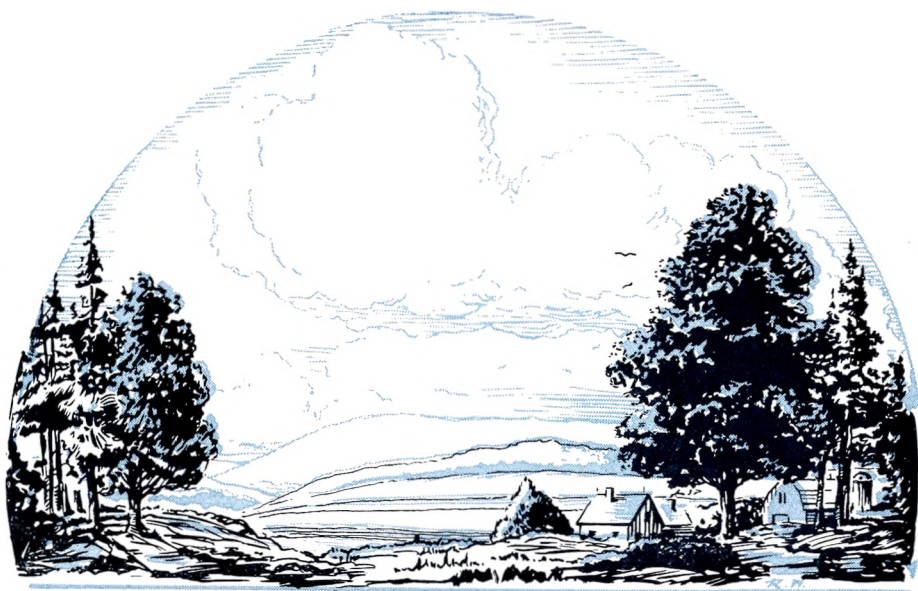
FROM THE MINISTER

Conservation of natural resources is vital to our people and for many years your Government has been carrying out new programs in this field. The most recent one has been the establishing of Conservation Authorities, primarily in Southern Ontario, and nineteen have been established to date.

I wish to congratulate you on the splendid work you have done thus far. In this booklet, which is a report on the activities of the Authorities, you will also find suggestions for types of work not already attempted.

I also hope that it will encourage municipalities where Authorities are not now established to organize in this way and avail themselves of the benefits provided by this new program.

A handwritten signature in blue ink, appearing to read "A. M. Mikee". The signature is fluid and cursive, written on a light blue horizontal line.



DEPARTMENT OF PLANNING AND DEVELOPMENT

HON. W. M. NICKLE, Q.C., *Minister*

A. H. RICHARDSON, *Chief Conservation Engineer*

OUR VALLEY

A Report TO THE PEOPLE OF THE
NINETEEN AUTHORITIES IN ONTARIO

PRINTED AND PUBLISHED BY BAPTIST JOHNSTON, PRINTER TO THE QUEEN'S MOST EXCELLENT MAJESTY

CONSERVATION AUTHORITIES IN ONTARIO

AUSABLE RIVER CONSERVATION AUTHORITY

H. G. Hooke, *Secretary-Treasurer*, Box 188, Exeter

BIG CREEK REGION CONSERVATION AUTHORITY

G. G. Bramhill, *Secretary-Treasurer*, Simcoe

*CATFISH CREEK CONSERVATION AUTHORITY

D. M. Halpenny, *Secretary-Treasurer*, Aylmer

CREDIT VALLEY CONSERVATION AUTHORITY

W. Elmer Wright, *Secretary-Treasurer*, Port Credit

DON VALLEY CONSERVATION AUTHORITY

Murdoch McIver, *Secretary-Treasurer*, 454 University Ave., Toronto

ETOBICOKE-MIMICO CONSERVATION AUTHORITY

F. L. Lunn, *Secretary-Treasurer*, Court House, Brampton

GANARASKA RIVER CONSERVATION AUTHORITY

Andrew C. Morris, *Secretary-Treasurer*, 15 Victoria St. S., Port Hope

GRAND VALLEY CONSERVATION AUTHORITY

H. C. Elliott, *Secretary-Treasurer*, 27 Dickson St., Galt

GRAND RIVER CONSERVATION COMMISSION

E. F. Roberts, *Secretary-Treasurer*, Box 605, Brantford

UPPER HOLLAND VALLEY CONSERVATION AUTHORITY

Wesley Brooks, *Secretary-Treasurer*, Box 759, Newmarket

HUMBER VALLEY CONSERVATION AUTHORITY

K. G. Higgs, *Secretary-Treasurer*, Bolton

*MIDDLE MAITLAND VALLEY CONSERVATION AUTHORITY

Cyril W. Bamford, *Secretary-Treasurer*, Listowel

MOIRA RIVER CONSERVATION AUTHORITY

Col. R. Vanderwater, *Secretary-Treasurer*, Foxboro

NAPANEE VALLEY CONSERVATION AUTHORITY

G. D. Walters, *Secretary-Treasurer*, Box 224, Napanee

NEEBING VALLEY CONSERVATION AUTHORITY

D. M. Martin, *Secretary*, City Hall, Fort William

OTTER CREEK CONSERVATION AUTHORITY

A. S. Wagner, *Secretary-Treasurer*, Box 340, Tillsonburg

R.D.H.P. CONSERVATION AUTHORITY

(Rouge River, Duffin Creek, Highland Creek, Petticoat Creek)

Earl Graham, *Secretary*, Markham

SAUGEEEN VALLEY CONSERVATION AUTHORITY

R. V. Brittain, *Secretary-Treasurer*, Walkerton

*SOUTH NATION RIVER CONSERVATION AUTHORITY

Alexander Roger, *Secretary-Treasurer*, Box 25, Billings Bridge

UPPER THAMES RIVER CONSERVATION AUTHORITY

L. N. Johnson, *Secretary-Treasurer*, R.R. 5, London

*Not reported on in this issue.

ACTIVITIES OF THE AUTHORITIES

● WATER

Flood control dams, river channel improvements and diversions, community ponds, irrigation ponds, farm ponds, and water spreading for recharging ground water supplies.

● LAND

Little valley programs, land use improvement demonstrations, land judging competitions, co-ordination of land use planning, and pasture farming.

● FOREST

Authority forests (28,600 acres), tree-planting machines for private planting, Authority planting on private land, and demonstration woodlot projects.

● RECREATION

Acquisition of conservation areas for public use, community ponds, parks and picnic sites.

● FISH AND WILDLIFE

Stream improvement competitions, pollution control, and children's trout fishing events.

● HISTORY

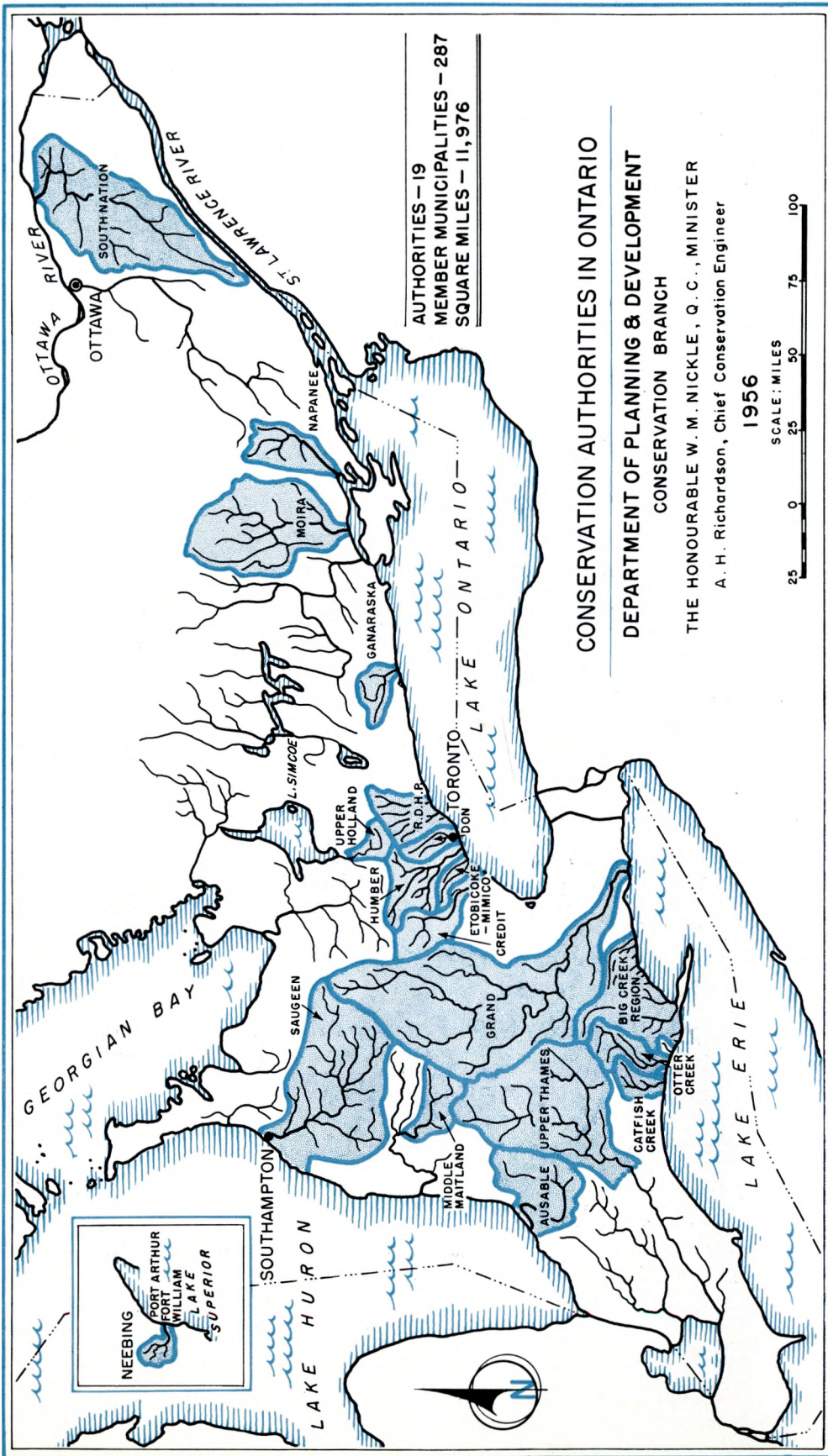
Acquisition of buildings and properties of historical interest on conservation land, collections of early tools and implements used in the development of agriculture and forests, and the marking of historic places and events.

● EDUCATION AND PUBLICITY

Publication and distribution of conservation literature, public conservation nights, exhibits at fairs, school lectures and tours, conservation trails, the production of coloured slides and motion picture films, and books for libraries.

The cover picture is from a painting by Manly MacDonald, R.C.A. The locale is the Lonsdale Mill Pond, on the Salmon River in Hastings County.

With rich colour and a sincere charm, the artist depicts an activity now rarely seen, ice cutters at work on the mill pond.



AUTHORITIES — 19
MEMBER MUNICIPALITIES — 287
SQUARE MILES — 11,976

CONSERVATION AUTHORITIES IN ONTARIO
DEPARTMENT OF PLANNING & DEVELOPMENT
CONSERVATION BRANCH

THE HONOURABLE W. M. NICKLE, Q. C., MINISTER
A. H. Richardson, Chief Conservation Engineer

1956

SCALE : MILES
25 0 25 50 75 100

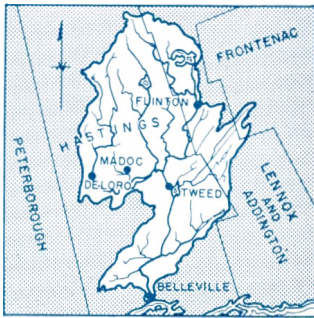


Department of Planning and Development display at the Canadian National Exhibition. The exhibit depicted the flood on the Humber River which followed Hurricane Hazel and the work of the Conservation Authorities in Ontario in Soil, Water, Forest and Wildlife Conservation.

(Ont. Dept. of Travel & Publicity)

THE Historical Sites Advisory Board, under Nelson Boylen, has recently engaged Mrs. R. H. Neil of Thornhill as an historical consultant. Mrs. Neil will prepare a plan of development of the Dalziel Barn located at the Dalziel Pioneer Park as a museum for pioneer agricultural implements. Four classes from Toronto schools have visited the barn this fall to study pioneer life. Conservation demonstrations located in the park have also proved of considerable interest.

Acres of land in Conservation Authority Forests as of January 1st, 1956: Ausable 1,606; Big Creek 1,443; Credit 100; Ganaraska 7,018; Grand 2,043; Humber 950; Maitland 350; Moira 3,452; Napanee 4,379; Otter 162; Saugeen 4,329; Thames 2,801; Total 28,633.



MOIRA

CONSERVATION AUTHORITY

The Moira Watershed is an area of 1,056 square miles extending from Lake Ontario approximately 60 miles north. It includes parts of the Counties of Hastings and Lennox & Addington. Its member municipalities include the city of Belleville, 3 villages and 13 townships. The Authority was established in 1947.

RECENT purchases of 450 acres in the Townships of Hungerford and Elzevir have increased the total area of the Moira Forest to 3,452 acres, and the Department of Lands and Forests is planning to plant an additional 64,000 trees in this area next spring. The Authority tree planter will be available to private landowners for spring planting. Reservations should be made as early as possible with the Field Officer.

ON request of the Authority, the Conservation Branch of the Department of Planning and Development reported on the costs of repairing two dams on the Skootamata River; one at Flinton, the other at Slave Lake, five miles north of Flinton. After examining these dams and submitting the costs to the Authority, it was decided that the expense involved in repairing these was too great for the present. A new dam was completed in 1955 by the Ontario Department of Public Works at the outlet of Skootamata (Loon) Lake. The purpose of this dam is to control the levels of that lake.

The Surveyor-General of Ontario has granted approval of the Authority's request to take over the control, operation and maintenance of the Lingham Lake dam, primarily for improvement of summer flow on the Moira River and its tributary, the Black River. The dam creating Lingham Lake was built by the Ontario Department of Public Works about 30 years ago. It is located in Grimsthorpe Township, 17 miles north of Madoc, on the Black River, which flows through Queensboro and joins the Moira River west of Actinolite. Lingham Lake is two and a half miles long and two miles wide, and its entire shoreline is Crown Land. The Authority will release water from the Lake during the dry months of summer, thereby assisting water-driven mills and fish life, and maintaining the level of Stoco Lake.

THE exceptional rainfall in the southern part of the watershed in September and October caused rivers and streams to run at freshet level, and resulted in some local flooding. The Belleville rain gauge registered 11.70 inches of precipitation in the month of October, compared with 2.74 in October



The Authority maintains a tree-planting machine which is available to farmers at a nominal cost. Note that trees are planted on the contour.



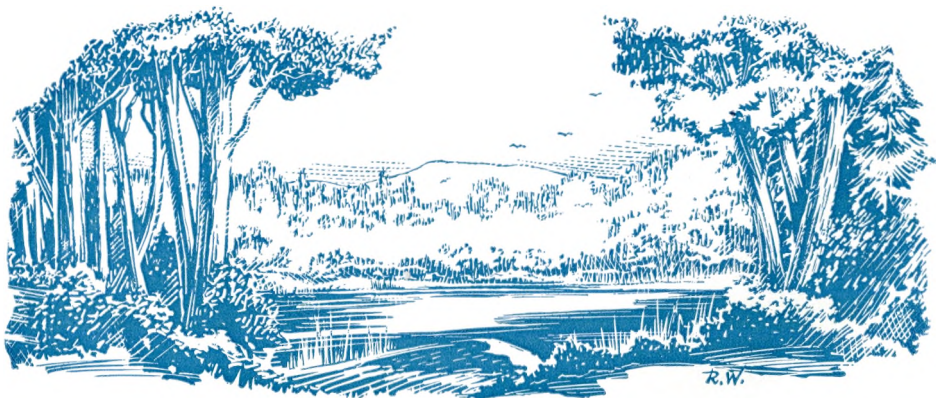
1954, and 2.27 inches—the ten-year average for the month. This figure sets a new rainfall record for any month since readings were commenced at Belleville. The total precipitation for the first ten months of 1955 was 36.09 inches, compared with the ten-year average for these months of 25.78 inches, and this trend continued in November and December.

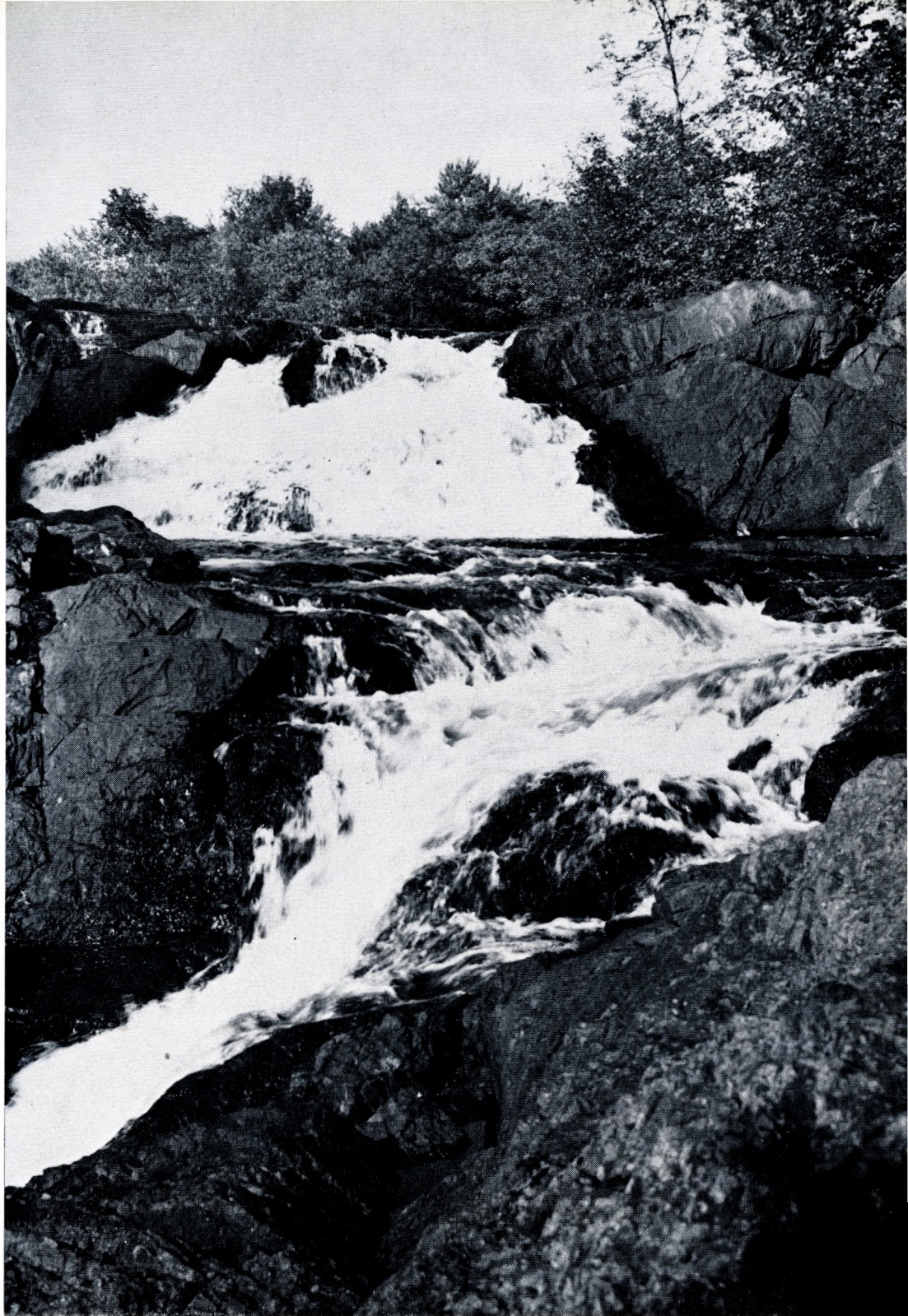
THE O'Hara Mill project has progressed steadily under the supervision of Authority members Earl Sager and Elmer Wood. The mill was completely dismantled and rebuilt by Mr. Ralph Franklin of Queensboro. Most of the parts of the original mill have been reinstalled, with the exception of the wheel shafts and crank, which had to be remade from large white oak logs.

Preparations are now being made to reconstruct the O'Hara dam, which provided the power for the mill. Wet weather made it impossible to clean out the pond bottom and dam sites as planned, so this work will have to wait until a dry spell in the summer. Several men were employed to cut and burn the brush established on the old pond bottom, and a start has been made on cleaning up the picnic area. Plans have also been made to reforest additional portions of the property in the spring.

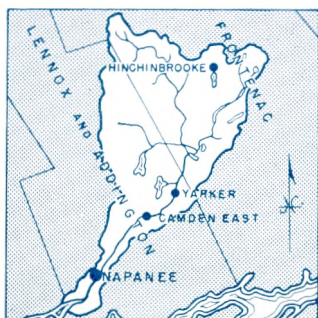
Donations which have greatly assisted in this work have been received from the Deloro Smelting & Refining Co. Ltd., Gillies Bros. & Co. Ltd., Braeside, the Madoc Township Council, Sawyer-Stoll Lumber Company, Mr. B. L. Thompson of Tweed, and A. E. Wicks Lumber Company of Cochrane. The Authority is especially grateful to the Toronto Anglers' and Hunters' Association for its generous gift.

MR. Michael Chubb, B.Sc.F., has been appointed by the Department of Planning and Development as Field Officer for the Authority, and it is planned to move the Authority Office to Tweed early in the new year.





The High Falls on the Skootamatta River provide one of the most spectacular sights on the Moira Watershed. The falls are about a mile north of No. 7 Highway and are surrounded by dense mixed pine and hardwoods. No road approaches the falls and they are seldom visited.



NAPANEE

CONSERVATION AUTHORITY

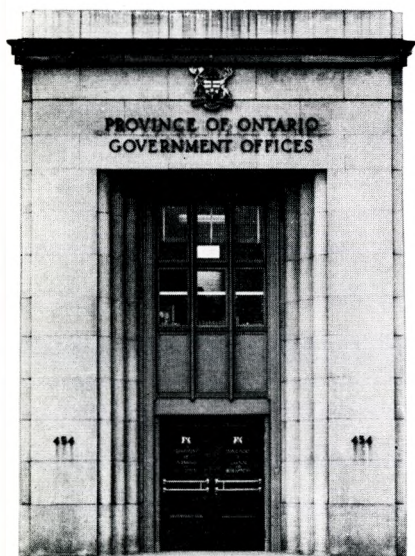
The Napanee Watershed is an area of 307 square miles extending from Lake Ontario approximately 38 miles north. It includes parts of the Counties of Frontenac and Lennox & Addington. Its member municipalities include one town, a village and 9 townships. The Authority was established in 1947.

OPTIONS of purchase on 2,054 acres in the Township of Hinchinbrooke have been taken up in 1955 and are now in the process of transfer of title to the Authority. These additions are contiguous or adjacent to the 2,386 acres of the Napanee Authority Forest. The incorporation of the sub-marginal agricultural land into the Authority Forests which will be planted, managed and protected by the Department of Lands and Forests for 50 years, will not only be a profitable financial undertaking, but will have far-reaching benefits on stream flow conditions on the lower Napanee River. The Authority is grateful to Mr. W. E. Edwards of the Ontario Department of Lands and Forests for his invaluable assistance in implementing the Authority's reforestation policy.

THE extreme dry weather of the past summer created an almost record low flow of the river at Napanee, with a volume of three cubic feet per second being registered at the Napanee gauge. The flow required to meet the water-supply needs of the Town of Napanee is estimated to be 35 cubic feet per second. The proposed scheme of the Authority to establish a dam at the outlet of Second Depot Lake, 17 miles upstream from Napanee, would lower the spring flood crest and would provide a minimum flow throughout the summer of 43 cubic feet per second. A delegation consisting of the Chairman of the Authority, the Mayor of Napanee and the members of the Legislature for Prince Edward-Lennox and for Addington met with the Hon. W. M. Nickle, Minister of Planning and Development to present the Authority's case for a grant from the Provincial Government towards this project.

Conservation farming aims at keeping as much water as possible on sloping lands and removing the excess without causing unnecessary damage. Conservation is a science whose principles are found in the Laws of Nature. There is no appeal or amendment to these laws; we must learn to co-operate with them. One of the fundamental laws of nature is that water tries to seek its own level and in so doing will run down hill on any farm. If this surface water moves unchecked the carrying capacity is increased 64 times as the velocity is doubled.—L. R. Webber

454
University
Avenue





RACE

It is well for a man to rest
from his labours and partake of
the fruits of this bountiful land.

Let us give thanks, for they
are the gift of God. Amen.