

OUTLOOK

The Newsletter of THE HASTINGS COUNTY HISTORICAL SOCIETY

P.O. BOX 1418 - BELLEVILLE, ONTARIO
K8N 5J1

March 1, 1985

1. This is an abbreviated edition of OUTLOOK. Five Saturday morning workshops to add archival materials to our growing collections in the Corby Library's Canadiana Room had taken up the time usually set aside to prepare OUTLOOK. As a reader of OUTLOOK, you will be saddened by the short version. However, as a researcher, genealogist, and local history enthusiast, you will be gladdened by the quantity of first-rate material that has been added to our archives. Thanks to BETSY BOYCE, ADELE DIBBEN, GEORGE SUPER, and GARY STAPLEY for their help in these workshops. Further sessions are planned for Saturday mornings later this month and we invite others to pre-register to help. Call me at 968-5023.
2. Our HERITAGE DAY CELEBRATION in February dealt with underground archaeology in the Moira River Drainage Basin during the summer of 1984. The presentation by HUGH DAECHSEL was extremely well received.

Our March 19th meeting continues the theme of searching for our past through archaeology. KENN M. FEIGELMAN, Director of Operations for Deep/Quest 2 Expeditions, will be in charge of a presentation on UNDERWATER ARCHAEOLOGY. Kenn will highlight a program that will include:

- . a narrated slide presentation of Deep/Quest 2's "Operation Beta" - Phase I, plus video-taped footage produced on shipwrecks beneath the waters of Lake Ontario
- . a display of underwater filming accessories
- . a collection of artifacts recovered on expeditions
- . exciting news of underwater activities being planned for the summer of 1985

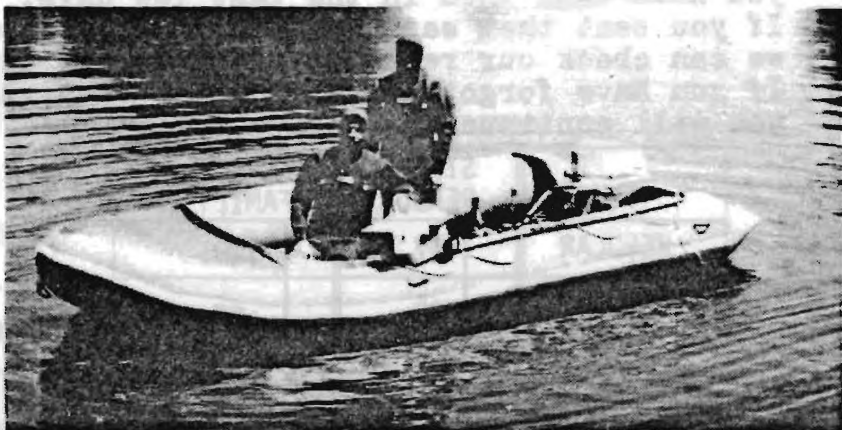
Kenn spoke to our Society a few years ago, and we look forward to his return visit.

The March 19th meeting will be held in the Auditorium of the QUINTE LIVING CENTRE at 370 Front Street in the heart of Belleville.

There will be a social half-hour with coffee and displays at 7:30 P.M. and the meeting begins at 8:00 P.M. Come early to get a good seat near the large TV and to enjoy what promises to be an exceptional display of materials related to underwater archaeology. A special invitation to our younger members and friends.

From an earlier "What's Happening" we append the following:

"Kenn Feigelman's fascination with the hidden world under water began very early in life. He came home one day soaking wet, mud to the knees of his jeans, and told his mother what he'd seen while walking on the bottom of a nearby pond . . ." How had he done this? Perhaps he'll share the answer with us on March 19th.



Kenn Feigelman, Director, and Martin Coxon, Dive Master with Operation Beta, aboard their inflatable 16 1/2 foot Avon boat.

3. Speaking of archaeology, this is PENNY GORDON's account of the Heritage Day Meeting of more than 85 members and friends:

Tracing ancient history along Moira River

By PENNY GORDON
Staff Reporter

"I was pleased with what I found last summer," says Hugh Daechsel. "I wanted to find sites from the Middle Woodland period and I did find sites from the Middle Woodland period."

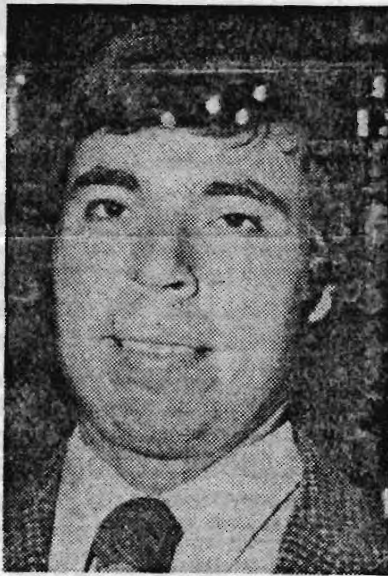
The finds, and the archeological project, involved much of the Moira River basin and Daechsel, a doctoral student in archeology at McMaster University, conducted a crew on a series of discoveries in the area last summer.

Speaking at the Hastings County Historical Society meeting Monday as it celebrated Heritage Day in Canada, Daechsel recounted the finds he and his crew made at various points along the river valley.

In all, he said, 17 Middle Woodland (300 B.C. to 800 A.D.) native sites were located. And Daechsel has already identified and catalogued the material from nine.

That's a feat in itself since there were more than 10,000 artifacts unearthed during the project.

Not all the pieces were from the Middle Woodland period, though. There was a brass button and a bone button from around the 19th century and a slate point that likely dates from antiquity—from about 2,000 B.C.



HUGH DAECHSEL

The woodland native pieces included representative tools and ceramic shards from various points in the period, and showed a progression in craft and refinement in manufacture.

But the most interesting discoveries from the explorations may come from carbon dating old hearth or fire pit material. And one flora examination of material in a pit

showed the use of corn in the area around 180 A.D. That's a particularly significant find, said Daechsel, since corn was not believed to have been introduced to the southern or eastern Ontario area until about 700 years later.

Also discovered at one of the sites was a bone point which was likely used as a spear, said Daechsel.

The project was done by test-pitting at likely sites in the river basin. Small pits were dug and the earth investigated for artifacts. If signs of native habitation were found, said Daechsel, a decision was made on whether to excavate larger squares.

Many of the sites discovered were around Plainfield, he noted.

A site at the Plainfield rapids, said Daechsel, was likely the most important in that it showed continuous habitation from about 400 B.C. to 1500 A.D.

Included in some of the other interesting artifacts discovered were parts of ceramic pipe bowls, likely from the Late Woodland period when it is known the use of tobacco existed. And one, small slate bead, drilled through the middle, was found before it could slip through the quarter-inch mesh used to sift the ground.

Sites with good potential have been marked, noted Daechsel, so archeological teams can return to the area in future to continue study.

4. WANTED: Information on the fountain now situated in the grounds of GLANMORE, also known as the HASTINGS COUNTY MUSEUM or the PHILLIPS-BURROWS-PAULKNER HOUSE. If anyone knows where it was made, who made it, and its various locations over the years, please contact JOAN DE SALIS at 966-1049.

5. Have you forgotten??? A red mark in the square below indicates that we can not find any record of your fees being paid for 1985. If you have sent them in the past few days, please disregard this mark. If you sent them earlier, please drop us a card or a call so that we can check our records. [Errors can happen and we're only human.] If you have forgotten to send the fees, please do it today, so that you will continue to receive OUTLOOK and enjoy the other benefits.

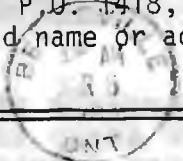


(A)
CHECK TYPE
OF MEMBERSHIP
DESIRED

TYPE	SINGLE PERSON	FAMILY
REGULAR	\$7.	\$10.
SENIOR CITIZEN	\$5.	\$7.
STUDENT	\$5.	XXXXXXXX

(B) _____
Enclosed is a donation of
..... dollars. Please
send receipt

NOTE: PLEASE RETURN THIS (including the mailing label) to the Hastings County Historical Society, P.O. 1418, Belleville, Ontario. If there is any error in the printed name or address on the label, please correct it. Many thanks.



YOUR monthly quota of exciting news and views, dots and dashes from the folks at the

HASTINGS COUNTY HISTORICAL SOCIETY
P.O. BOX 1418
Belleville, Ontario K8N 5T1

March 19 is
UNDERWATER
ARCHAEOLOGY
NIGHT . . .

