

## Belleville & District Chamber of Commerce

# 1864

# 150 Years of History

# 2014

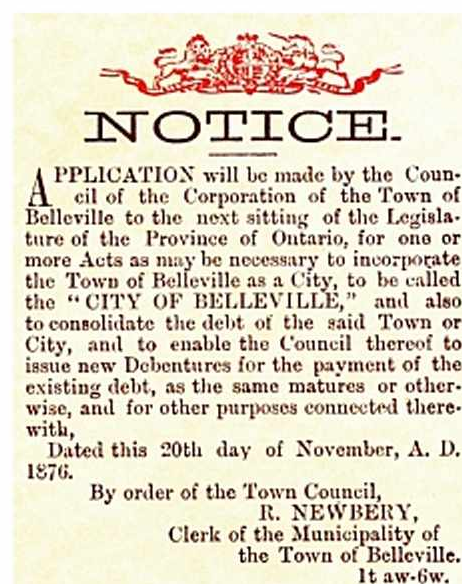
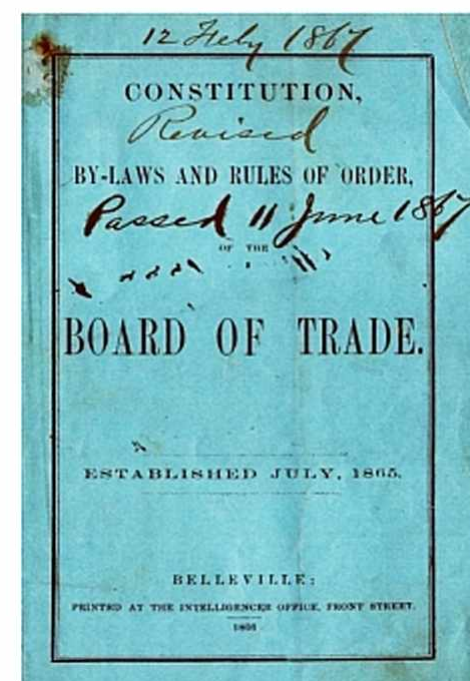
In 1816 the settlement at the mouth of the Moira River was surveyed and named Belleville. The Town of Belleville was incorporated under the Baldwin Act effective 1st January, 1850, with a population of about 2,200.



1864 - Discussions on the need for a Board of Trade. Inaugural meeting is called by the mayor on the 4th of July, 1865.

1877 - Belleville becomes a city. Grand inaugural celebration is held on the 2nd of July, 1878, population circa 11,000.

1884 - The Belleville Board of Trade receives letters of incorporation under the Boards of Trade Act.



1889 - Joint meeting of the Board of Trade and City Council is successful in inducing the Grand Trunk Railway to run trains down Pinnacle Street on market days.

1919 - Board of Trade reorganizes into a Chamber of Commerce, 5,000 booklets are distributed in 1920 and members volunteer their cars to show people around city and entertain tourists.

1929 - Four hundred Chambers of Commerce in Canada. Belleville population reaches 13,443. The

city purchases the hydro company and hydro rates are lowered by 30% in 1930.

1936 - The Chamber addresses the development of a swimming-beach and bay-shore parkway. Belleville becomes the leading centre in Canada for manufacturing locks and builders' hardware.



1946 - New Tourist Guide. The Chamber supplies 2,000 visitors with booklets, maps and information. Request is granted that one or two garages remain open until 7:00 p.m. to accommodate tourists.

1956 - Celebration of the 100th anniversary of railroading in Belleville, 17,000 tourism folders are distributed. Belleville population over 20,000.

1966 - Celebration of the 150th anniversary of the beginning of Belleville, followed in 1967 by Canada's centennial.

1978 - Belleville centennial celebrations. Population around 35,000. A log cabin is acquired as the centennial headquarters, which will later become the home of the Chamber of Commerce.



2013 - Belleville's population is around 50,000. Current Chamber of Commerce membership reaches 615, and plans are made to celebrate the first 150 years in 2014.





## Belleville & District Chamber of Commerce

# A Board of Trade

It was not surprising that prominent citizens of Belleville and Hastings County were considering forming a Board of Trade in 1864.

### CONSTITUTION OF THE BELLEVILLE BOARD OF TRADE.

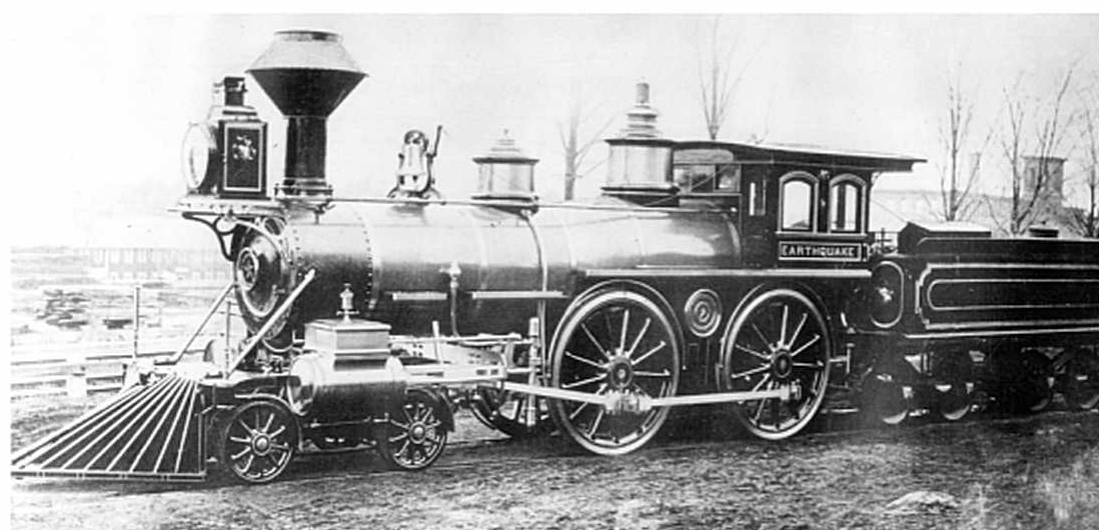
#### PREAMBLE.

We the undersigned being desirous of associating ourselves together for the protection of such measures as may be deemed best calculated to advance the interests of trade and commerce, both in a Provincial and Local point of view, having especial regard to the prosperity of the Town of Belleville and the County of Hastings, do hereby associate ourselves together for such purpose, under the name and style of "The Belleville Board of Trade," and adopt the following as the Constitution and By-Laws for the government of such Association :

The Hastings Directory reported, "The manufactures of Belleville have a degree of importance which few towns or cities of Canada can claim. Possessing one of the finest water privileges in the Province, and having access to foreign markets by railway and water, the inducements to invest capital in manufacture are by no means inconsiderable, and these privileges have been taken advantage of by men of capital and enterprise, who are rapidly adding to their own wealth, and contributing largely to the permanent prosperity of the town."

At the inaugural meeting on the 4th of July, 1865, Mayor Rufus Holden, Mackenzie Bowell, Billa Flint, Robert Read and Henry Corby were among those elected as directors of the Board of Trade.

It was agreed that: "Each and every person resident in the Town of Belleville, or the County of Hastings, carrying on Trade or Commerce of any kind therein, or being Cashier or Manager of any chartered Bank therein, or being engaged in the practice of any profession, and being of age twenty-one years, shall be eligible to become a member of the said Board of Trade."



After 1856, the Toronto-Montreal Grand Trunk Line was completed, the railway providing an alternative to transportation. Pictured here in 1858 is the "Earthquake" passing through Belleville. Source: Community Archives of Belleville and Hastings County uncatalogued poster image



Although only Front Street was paved, Belleville was developing rapidly. In this early photograph, circa 1864, taken from the hill on Bridge Street West looking east towards the town centre, many substantial buildings of masonry or brick can be seen. These include the old Court House (demolished 1971), the Merchants Bank (later the Corby Library) and St. Thomas Anglican Church.

Source: Community Archives of Belleville and Hastings County (HC01468 restored)



# Belleville & District Chamber of Commerce

## 1909 - Belleville and Her Industries



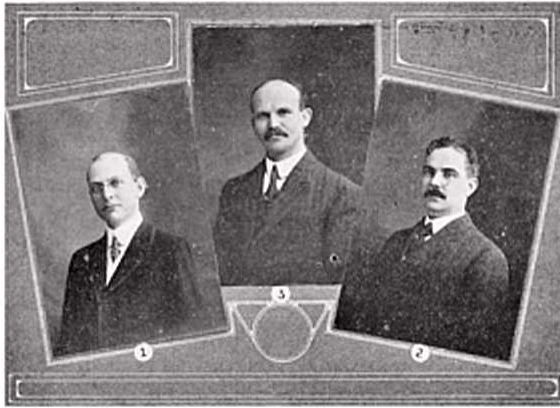
"Belleville, 'The Queen City of the Bay' is one of the oldest and most substantial of the smaller cities of the Province of Ontario."



"It is located on the far famed Bay of Quinte, at the mouth of the pretty River Moira . . . on the main line of the Grand Trunk Railway."

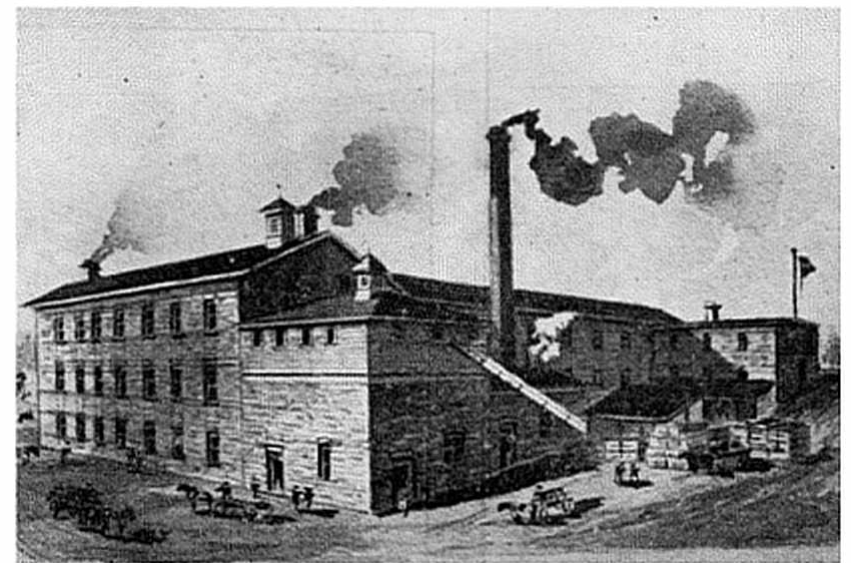
"The County of Hastings, of which Belleville is the County seat, is one of the greatest, if not the greatest, cheese producing Counties in the Province."

"During the summer the average cheese turnover amounts to thirty thousand dollars a week, in addition to immense quantities of butter, eggs and other dairy and farm produce."

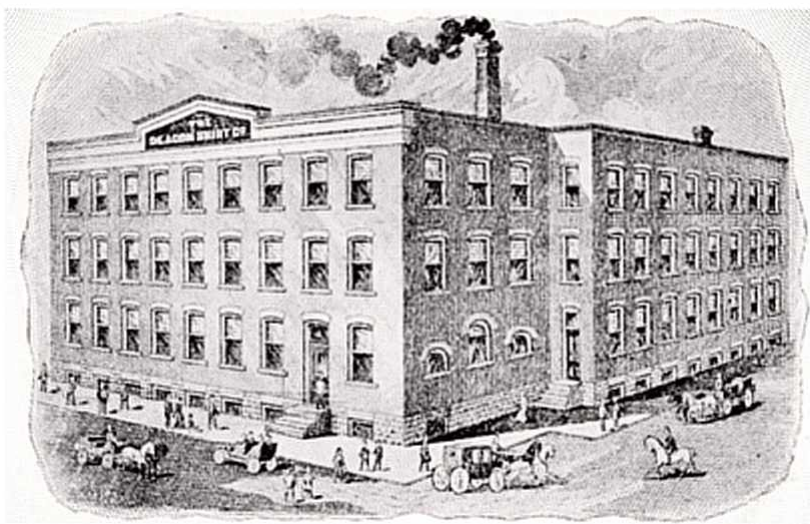


"The Belleville Board of Trade is composed of active, progressive business men who are looking to the advancement of the city."

"The present Officers of the Board are (1) Vice-President and Acting President, C. M. Reid; (2) Secretary, Fred Deacon; (3) Treasurer, T. Blackburn."

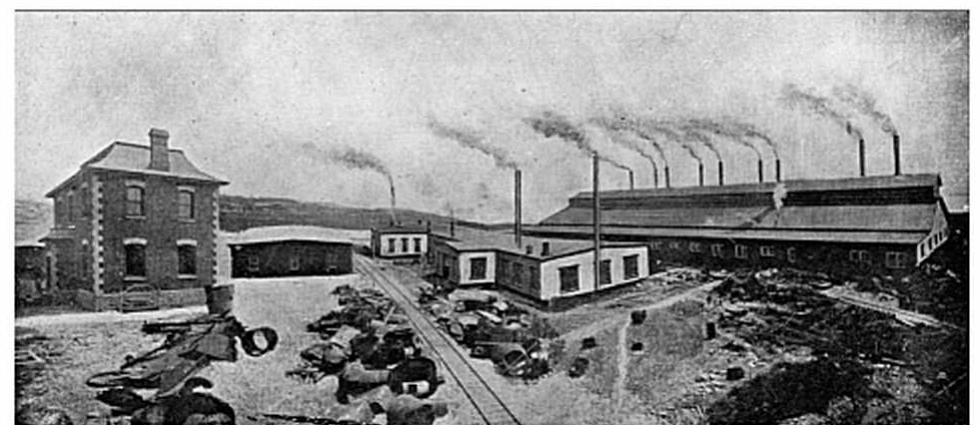


The Belleville Fruit & Vinegar factory



The Deacon Shirt factory

"The various steamboat lines give Belleville excellent service and great quantities of coal and other commodities are received by water every year. The principal lines of manufacture in the city include Cement, Steel and Iron, Whiskey, Brass Goods, Furniture, Woolens, Flour, Cigars and Wagons."



The Belleville Iron & Horseshoe plant



The Tickell & Sons furniture factory

All images and quotations taken from *Belleville and Her Industries*, published by Authority of Belleville City Council and Board of Trade.  
Source: Community Archives of Belleville and Hastings County



## Belleville & District Chamber of Commerce

# 1920s - Exhibitions

If newspaper reports are to be believed, then the 1922 Made-in-Belleville show was a great success. The *Intelligencer*

THE WEEKLY ONTARIO, THURSDAY, OCTOBER 26, 1922.

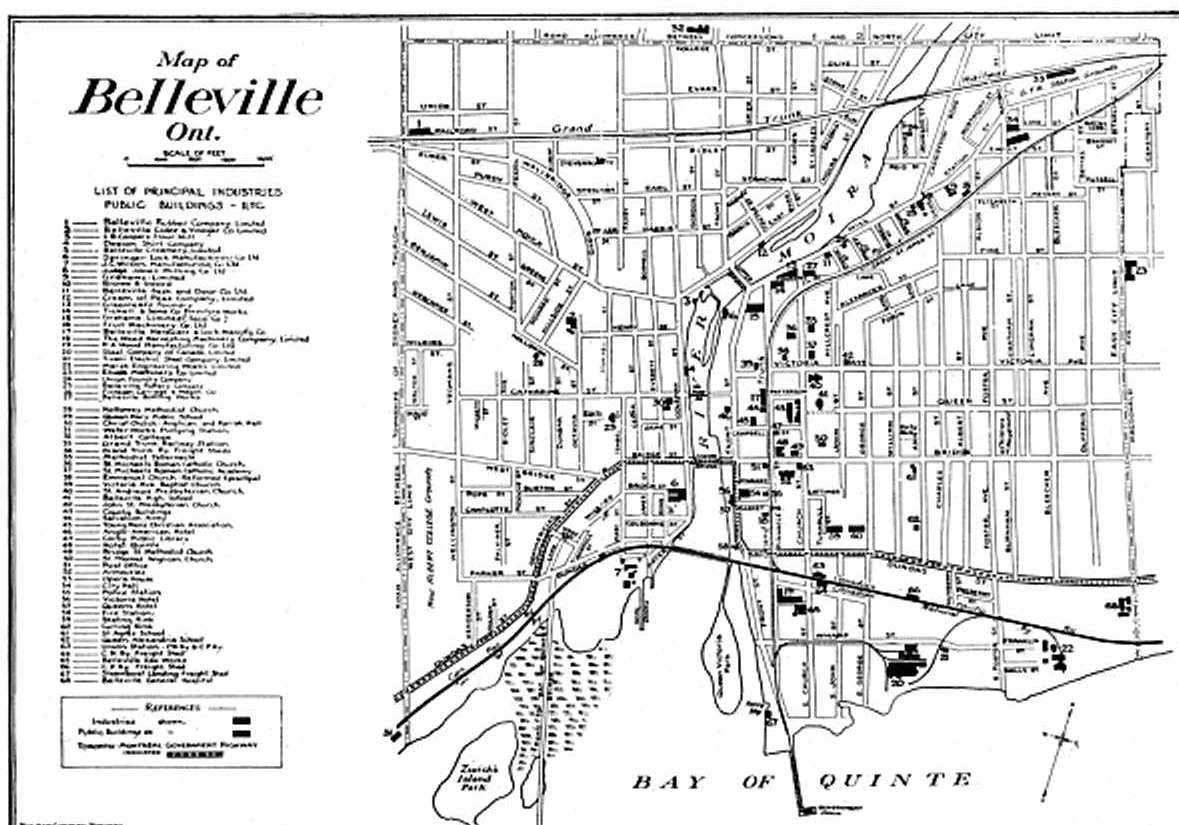
### LT.-GOVERNOR OPENS EXHIBITION

*Made-in-Belleville Show Revelation to Many Visitors*

reported, "Friday's attendance at the Armouries smashed all previous records, over twenty-eight hundred having paid admission. Shortly after eight o'clock the aisles began to get congested with a restless mass of humanity. It was useless to attempt to move freely about. . ."

In the 1920s, Belleville was a thriving city whose boundaries extended from MacDonald Avenue in the east, Sidney Street in the west and up to College Street in the north.

A Grand Trunk railway line ran along Great St. James Street and down Pinnacle Street to connect to the Canadian Pacific and Canadian National Railways before proceeding to the Government Docks.



Source: Community Archives of Belleville and Hastings County Mika fonds

But, as this 1920 picture of Market Square shows, the modes of transportation were changing. The horses and wagons were now being replaced with automobiles.



Source: Community Archives of Belleville and Hastings County (HC08141)

The photograph to the right of the 1923 Belleville Motor Show illustrates some of the types being offered for sale.

The Belleville Armoury was a popular venue for shows and exhibitions. The two images below from the Belleville Exhibition of 1930 are a who's who of the commerce of Belleville and the surrounding region.



Source: Community Archives of Belleville and Hastings County (HC01089)



Source: Community Archives of Belleville and Hastings County (HC01091)



# Belleville & District Chamber of Commerce

## 1923 - Gateway to Central Ontario

### BELLEVILLE

THE GATEWAY TO  
CENTRAL ONTARIO

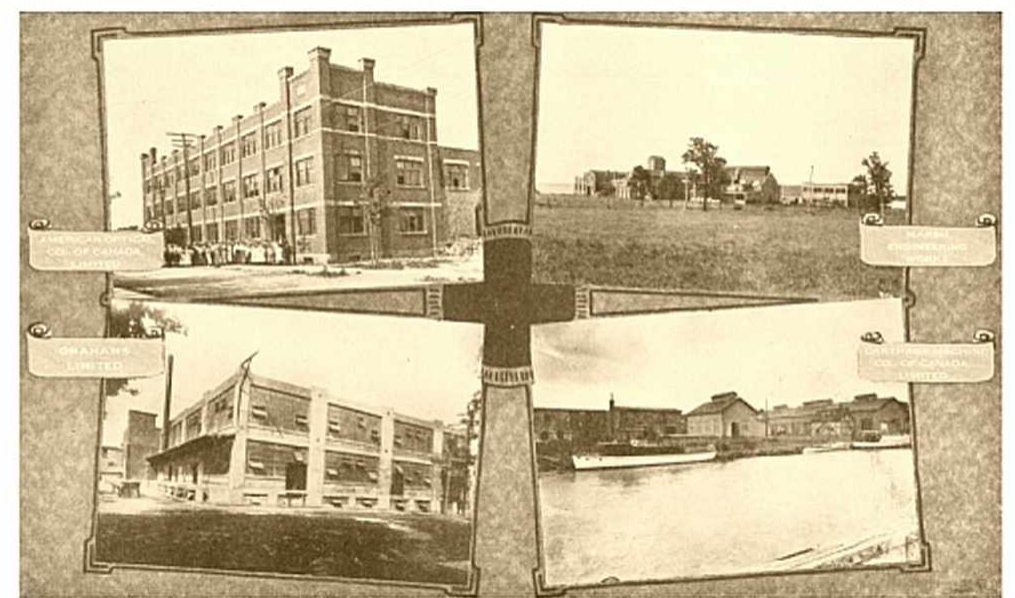
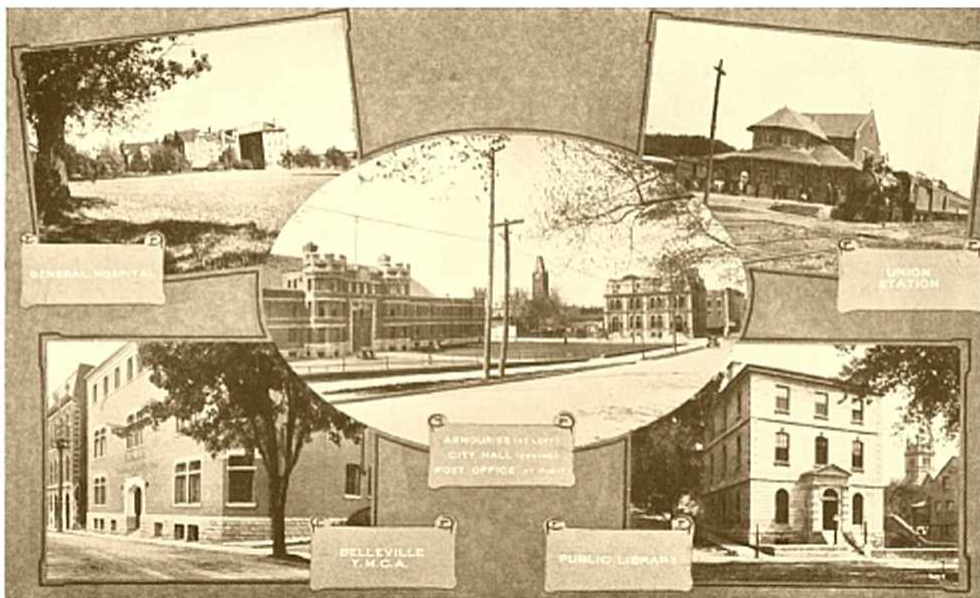
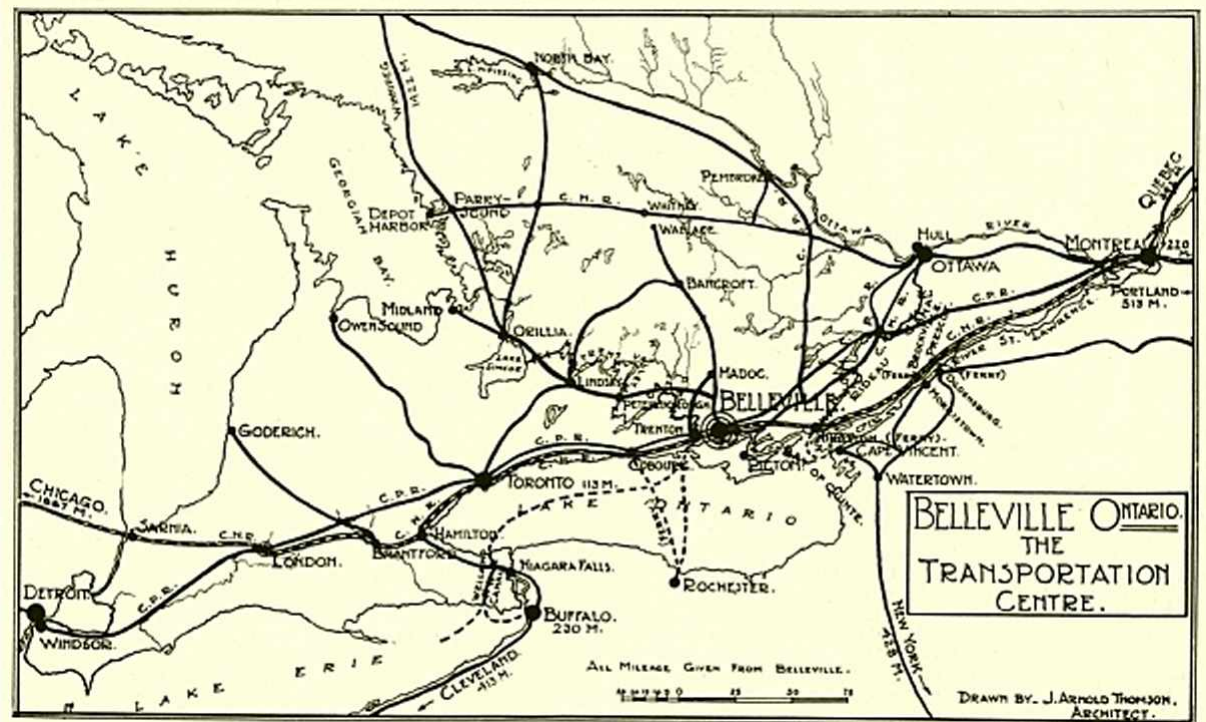


FRONT STREET—BELLEVILLE'S MAIN BUSINESS THOROUGHFARE.

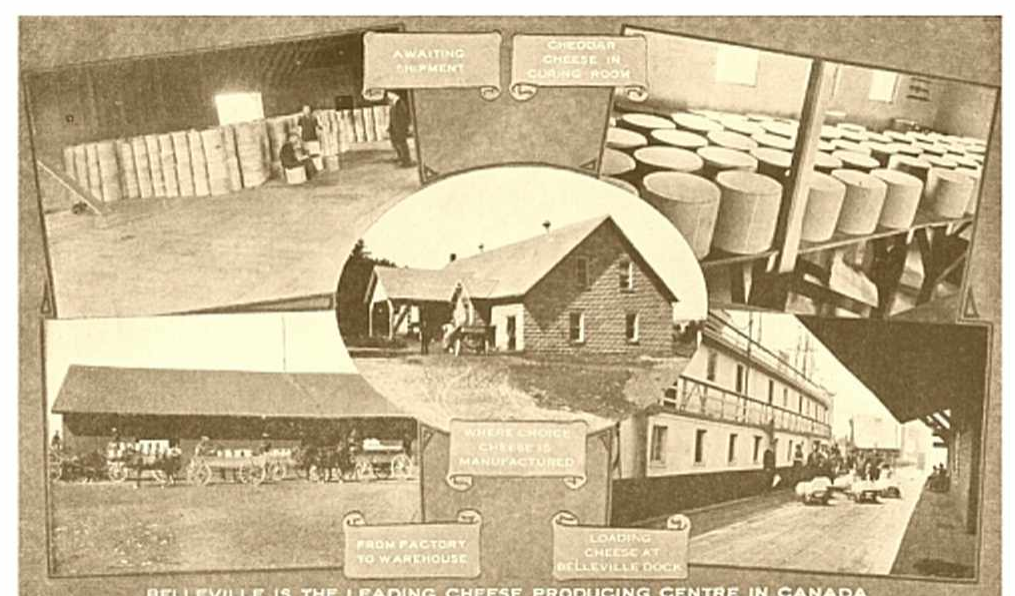
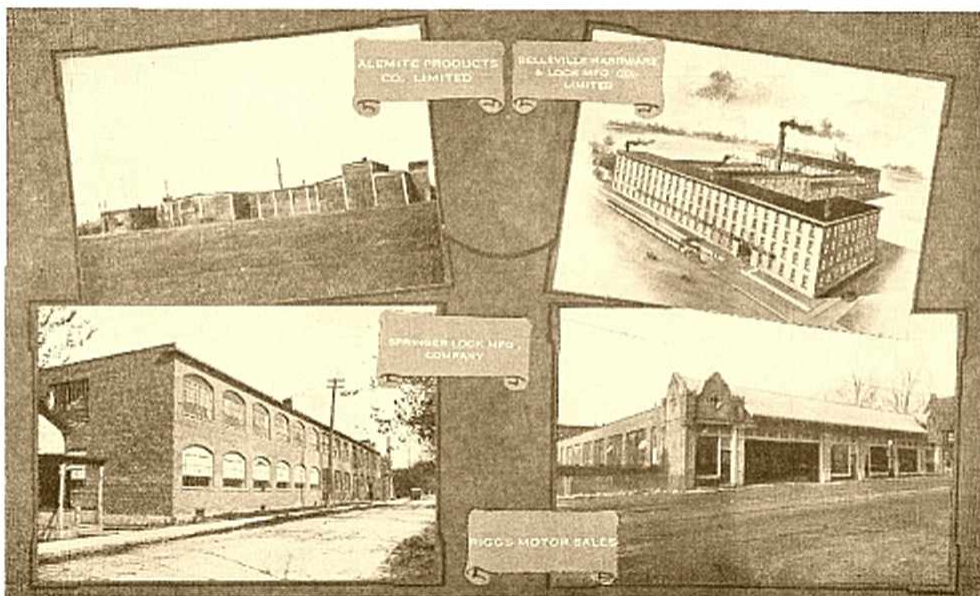
"The county of Hastings is one of nature's great treasure houses. In no area of equal extent on earth is there such a variety of geological formation and of mineral deposits. . . . the field . . . awaits the arrival of capital and enterprise to transform it into one of the world's most important centres of mining activity."

"Favorable labor conditions constitute one of Belleville's strong industrial attractions. The city has never had a strike in its history and the best of relations are maintained between employer and employed."

"More than forty varied industries have already established themselves in Belleville and have found a congenial home. Belleville factories and shops are now turning out pulp and paper making machinery, hoisting engines, mining equipment, desiccated foods, optical goods, burrs, locks and builders' hardware, lubricating systems, woven labels, ties, gloves and sweaters, infants' and invalids foods, powdered milk, artificial ice . . ."



". . . boats, canoes and skiffs, furniture, caskets, 'builders' materials, confectionery, flour, cereals, wood working and fruit machinery, fur garments, waggons and motor-busses, cheese factory utensils and numerous other commodities."



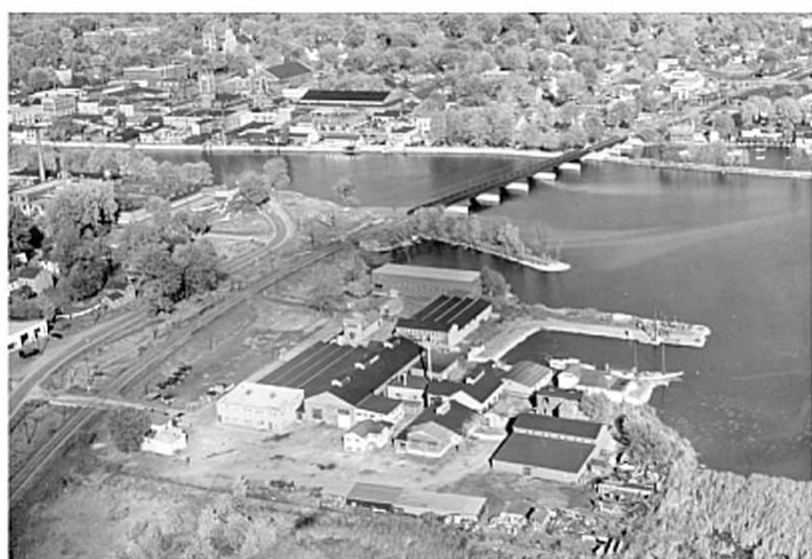
All images and quotations taken from *Belleville the Gateway to Central Ontario*, published by Authority of the Belleville City Council and the Belleville Chamber of Commerce. Source: Community Archives of Belleville and Hastings County



# Belleville & District Chamber of Commerce

## 1940s - Industry Is Booming

In the post-World War II era, industry boomed in Belleville as shown in this series of aerial photographs taken in 1948 and 1950. The scene on Front Street, dated to 1945 from car licence plates, illustrates this activity. Image right, courtesy of the Belleville & District Chamber of Commerce; all other images in this poster from the Community Archives of Belleville and Hastings County HCHS photograph collection.



Reliance Industries (previously Reliable Aircraft and Tool Co.) was located on Water Street. Corbin Lock works can be seen in the centre left. The roads in this area have been extensively changed in the last fifty years. (HC00380A)



The Stephens Adamson Plant located just east of Foster Avenue south on Franklin Street to south of the railway tracks (HC00380B)



The American Optical plant was located at the southeast corner of Sidney Street and Bridge Street West. The Quinte Exhibition grounds and the Northern Electric plant can be seen to the upper left. (HC00392B)



The Stewart Warner Alemite machine shop and shipping centre (centre right) situated between MacDonald Avenue and Stanley Street on the south side of Pine Street (HC00392A)



The Bakelite Plant was located to the east of Belleville on the south side of Dundas Street East. Contamination from this plant became a serious issue after the plant was closed. (HC00391B)



The Northern Electric Plant was located off Sidney Street just north of the race-track which is just visible in the lower left corner of this picture. (HC00379B)



## 1948 - The Finest Quarters Burn



The Jamieson-Bone Building circa 1920. The second floor windows on the south side had not yet been added.  
Source: Community Archives of Belleville and Hastings County (HC00515 cropped)

In 1948, Belleville was a bustling centre, and at the heart, located in the Jamieson-Bone building at 155-163 Front Street, was the Chamber of Commerce.

In the words of the *Gateway to Central Ontario* brochure: "The Belleville Chamber of Commerce has unquestionably the finest quarters devoted to this purpose in all Canada. The beautiful and massive office building was erected by one who was during his lifetime one of Belleville's most public-spirited citizens, the late Senator Corby."



Front Street, Belleville, looking south to City Hall in 1948.  
Source: Community Archives of Belleville and Hastings County  
(HC08307)

The *Intelligencer* reported, "Damage estimated at considerably over \$100,000 resulted here early this morning when fire of undetermined origin broke out in the Chamber of Commerce building and by eight-thirty had almost completely gutted the structure."

Firemen fought the blaze in temperatures of 20 below zero, their efforts being inadequate to cope with the mounting flames which broke through the roof shortly after seven o'clock.

When firemen answered the call, smoke was billowing out of several windows and flames were creeping up the inside walls. The two officers scrambled to safety down firemen's ladders."



East side of Front Street, Belleville, looking north in 1948.  
Source: Community Archives of Belleville and Hastings County  
(HC08169)



The scene on the morning after the fire  
Source: Community Archives of Belleville and Hastings County  
(HC04088 cropped)



## Belleville & District Chamber of Commerce

# 1978 - The Log Cabin

Before moving to the renovated and expanded Log Cabin, now located at the southeast corner of Pinnacle Street and Moira Street East on the west bank of the Moira River, the Chamber of Commerce offices were housed at 183 Pinnacle Street on the east side of Market Square.



The Log Cabin, January 2014. Photo Nick White



Market Square circa 1970. Chamber of Commerce offices were in the building on the upper left. Image courtesy of Belleville and District Chamber of Commerce

The story of the Log Cabin is told in *Belleville Centennial Celebrations, 1978 Souvenir Issue*.

In 1977, Tom Baird began to search for an authentic log cabin which would serve as headquarters for centennial operations. By May, he was able to tell the Moira River Conservation Authority that a century-old log cabin had been found.

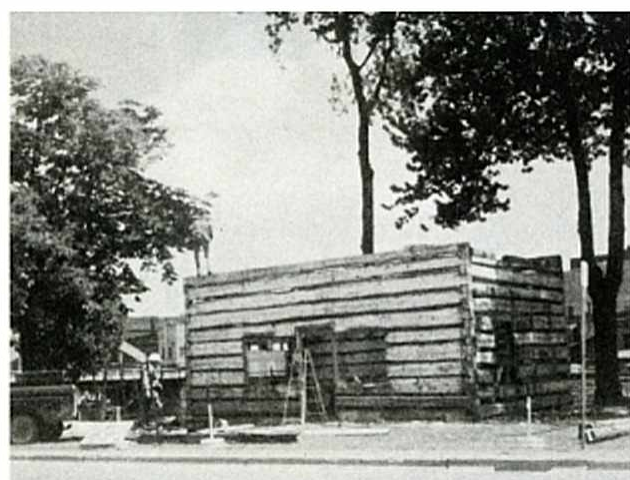
The log cabin was situated on the Chromasco Mine property at Haley's Station near Eganville in the Ottawa Valley, southwest of Pembroke. The last known family to have lived in the cabin were the McLaughlins. The dimensions of the building were 17' x 26' with 12" walls. It was originally a four-bedroom home with a centre hall plan.

What Tom Baird requested from the Authority was permission to locate the log cabin on a site in Panter's Park on the west bank of the Moira River across from City Hall. Permission was readily granted. The site was an ideal choice as it was on the river's banks that settlement began in the days when waterways were of great importance to the pioneer.



Source: Community Archives of Belleville and Hastings County (HMC00362)

To mark the arrival of the dismantled log cabin in Belleville, a mini-parade was staged. It



included two bands, several old-fashioned cars, two penny farthing bicycles and a number of people dressed in period costumes. Scheduled to be completed by mid-July, work on the cabin was carried out by enthusiastic volunteers ready to give their time, experience and labour.

Text and construction images from *Belleville Centennial Celebrations, 1978 Souvenir Issue*

