

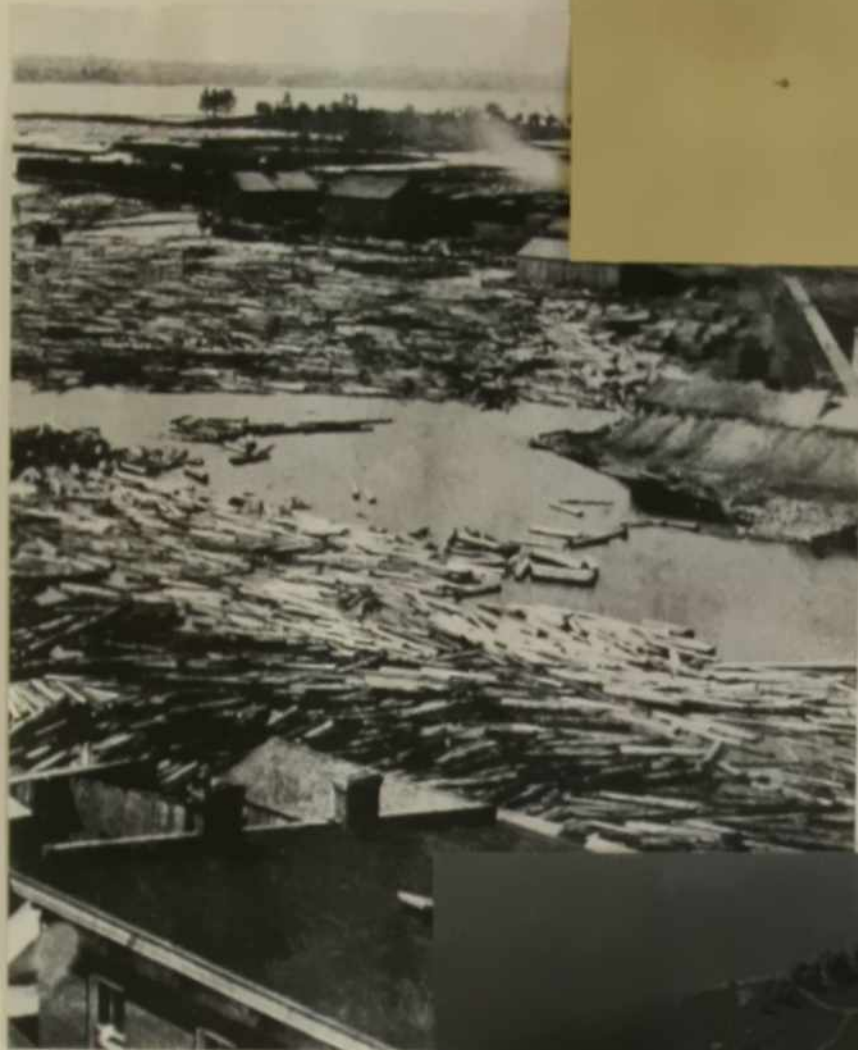
Waterfront Views 1919 and 1948



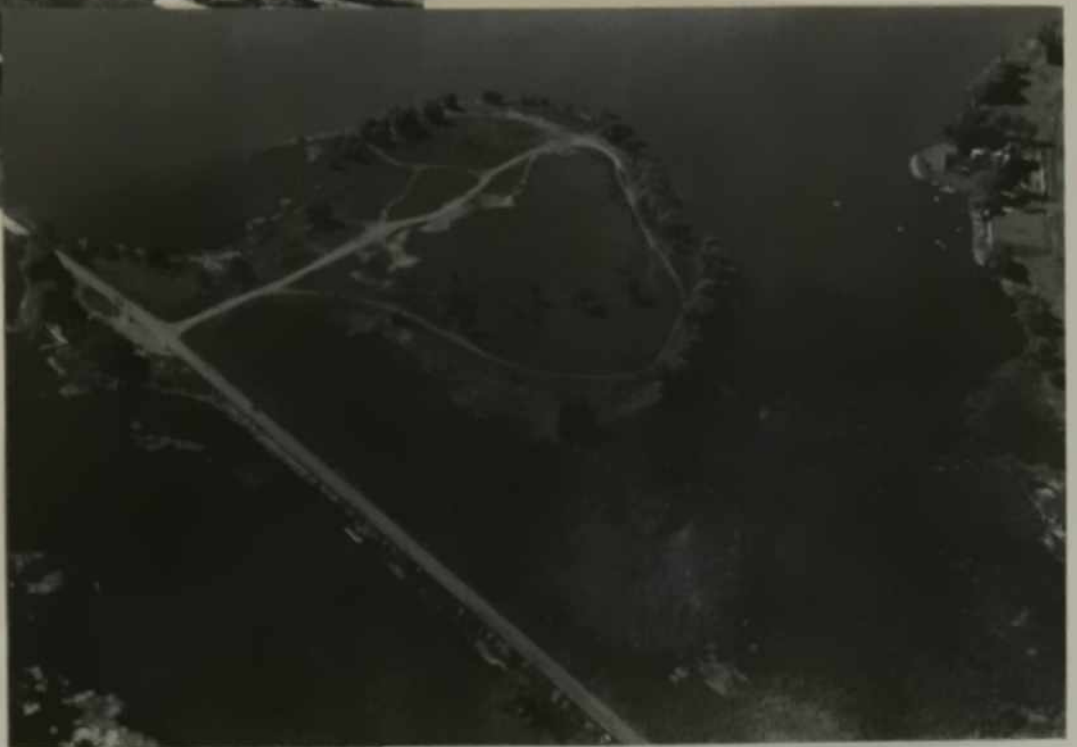
Billy Bishop and Barker did aerial photography of
Belleville and many other sites after the 1914-1918 War



**Zwick's Island
In Past Years**



- Two views of the Waterfront with Zwick's Island in the distance, circa 1875-1889
- 1948 view, before the 'dump' landfill work



Aerial Views of Belleville,
1948-1950



Consider how the City
has expanded since these
aerial photographs
were taken.

