

M^cCORMICK-DEERING

NO.62

**SIX-FOOT
HARVESTER-THRESHER**

TRUCK & FARM SUPPLY LTD.
phone 1721
128 CHURCH ST. BELLEVILLE



- **ECONOMY**
- **CAPACITY**
- **PERFORMANCE**
- **CONVENIENCE**

MCCORMICK-DEERING

THE No. 62 harvester-thresher is widely and favorably known in all grain and seed growing sections where a 6-foot combine is suited to acreage requirements.

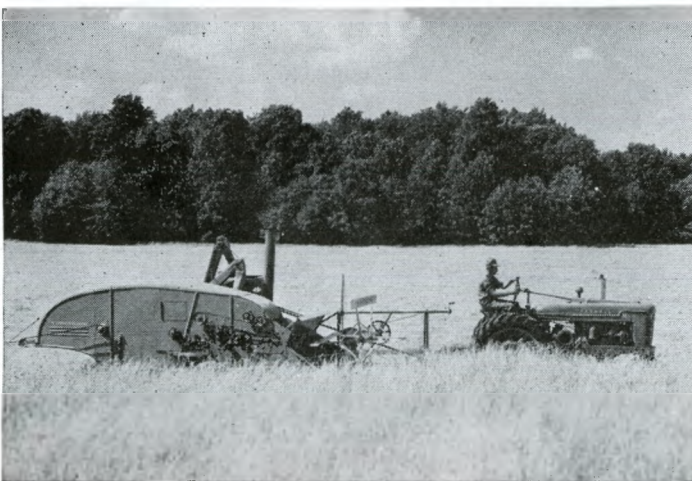
Representing a line of harvesting equipment known for tested worth, the No. 62 is considered outstanding by its owners both for capacity and for ability to handle all threshable crops with a minimum of change and adjustment.

Actual field use has revealed the advantages of its many proved features, such as auger-scoop feed and straight-line threshing with a variable-speed, full-width rasp-bar cylinder, and adjustable concave grate separation.

You need have no questions about the ability of the McCormick-Deering No. 62 harvester-thresher to save more bushels of grain and seed, whatever your crop, and thus make larger profits for yourself.

A Proved Thoroughbred

- 1** Full 6-foot cut—74½ inches between divider points.
- 2** Handles all threshable crops.
- 3** Combination auger-scoop feed.
- 4** Rasp-bar cylinder with variable speed control.
- 5** Concave grate adjustable for all grains and seed crops.
- 6** Large capacity concave and finger grates separation.
- 7** Double cleaning at chaffer and shoe.
- 8** Power drive or auxiliary engine operation.



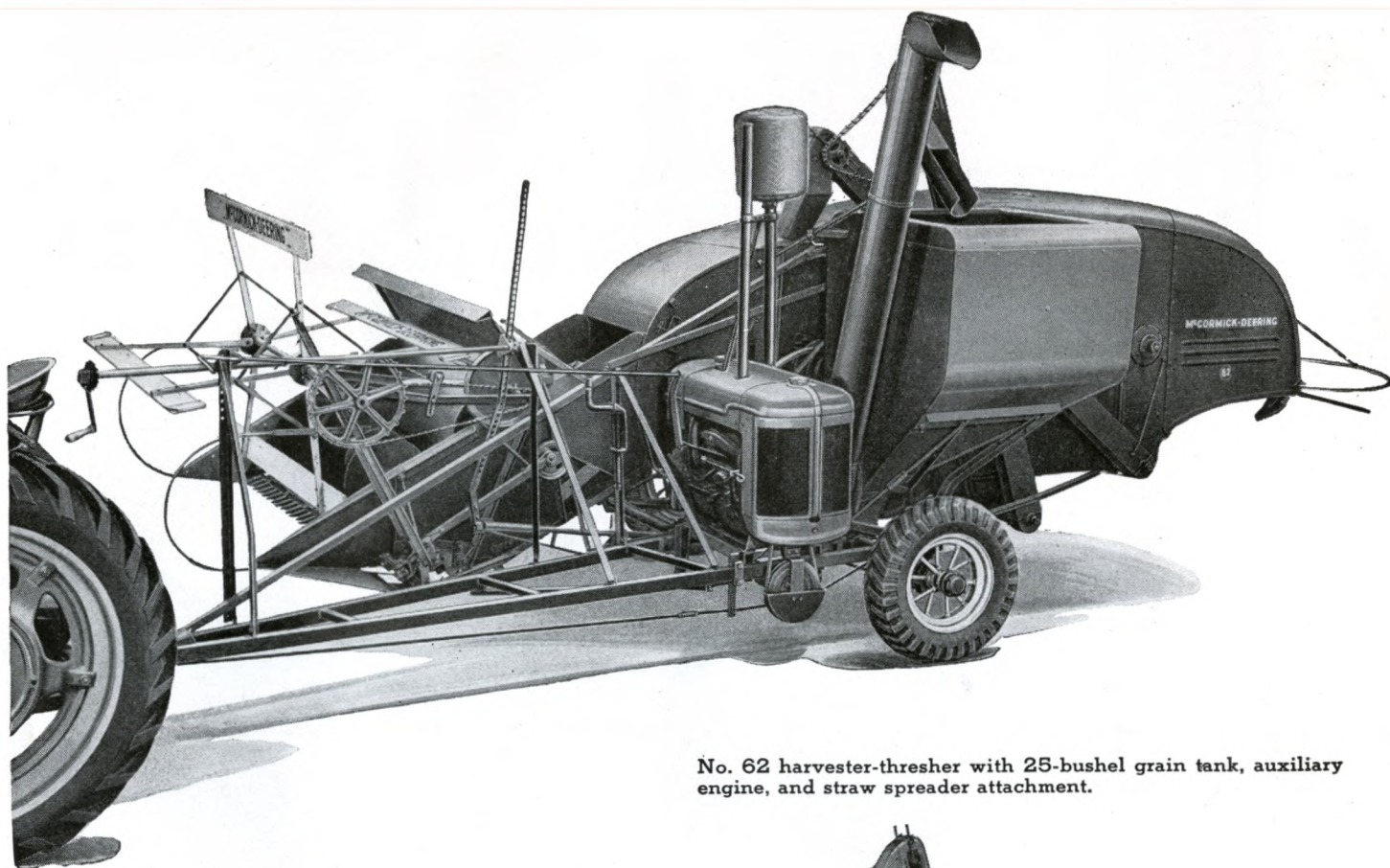
The No. 62 harvester-thresher combine has a full 6-foot cutting width. This combine is operating in wheat.



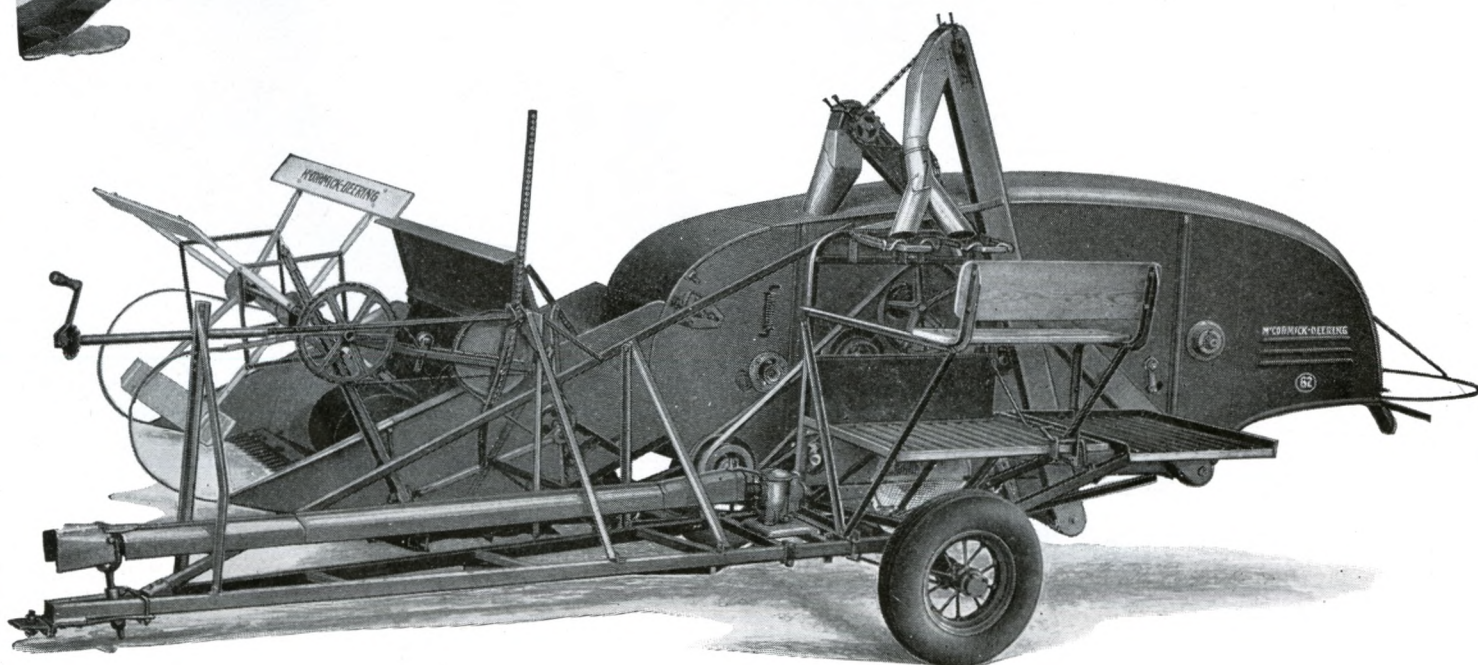
Adjustments for operating the No. 62 combine are convenient for one-man control. This machine is combining flax.

NO. 62

FROM EVERY ANGLE
THIS 6-FOOT COMBINE
HAS WHAT IT TAKES



No. 62 harvester-thresher with 25-bushel grain tank, auxiliary engine, and straw spreader attachment.

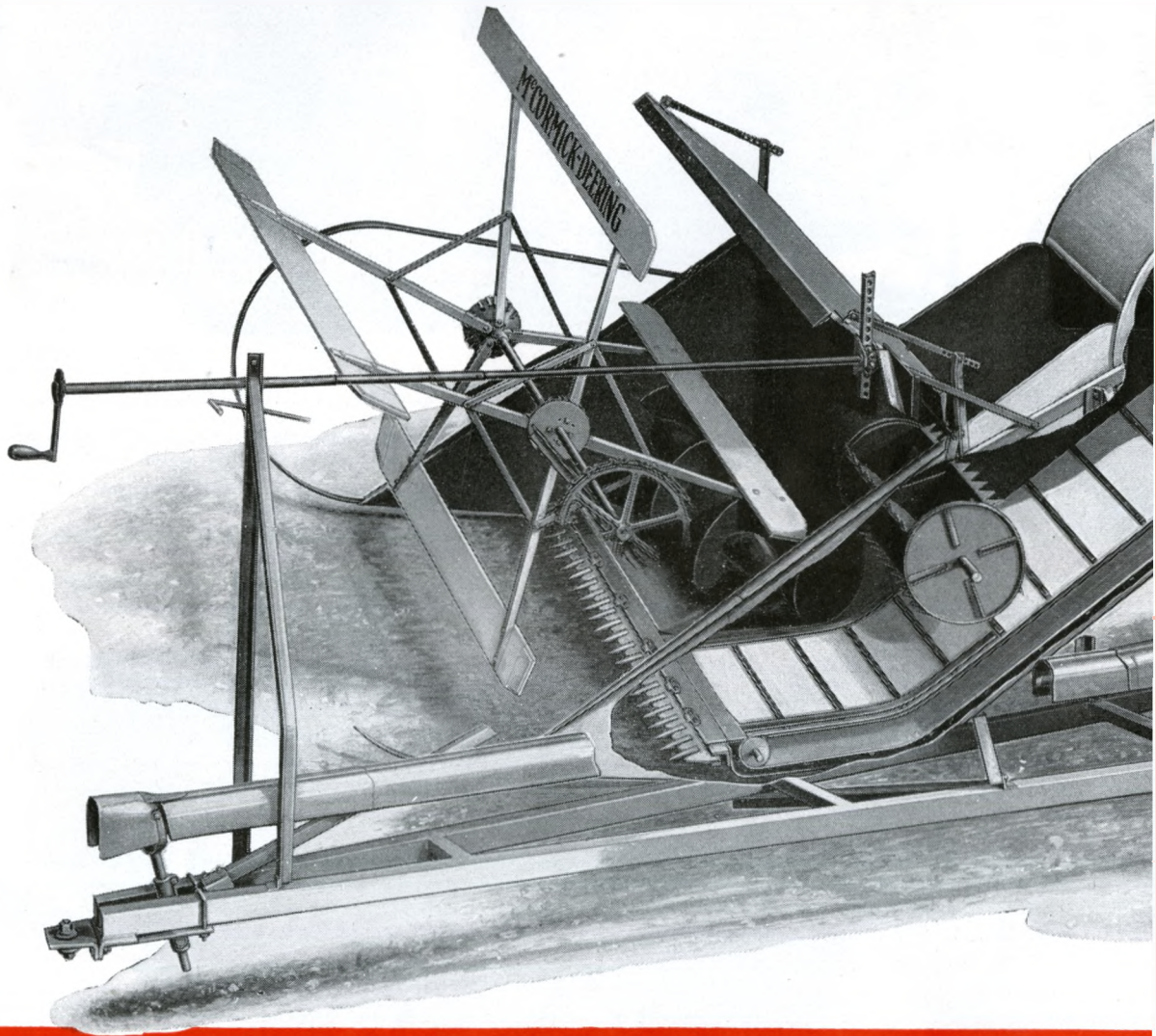


No. 62 harvester-thresher with bagger, power drive, standardized hitch, and straw spreader attachment.

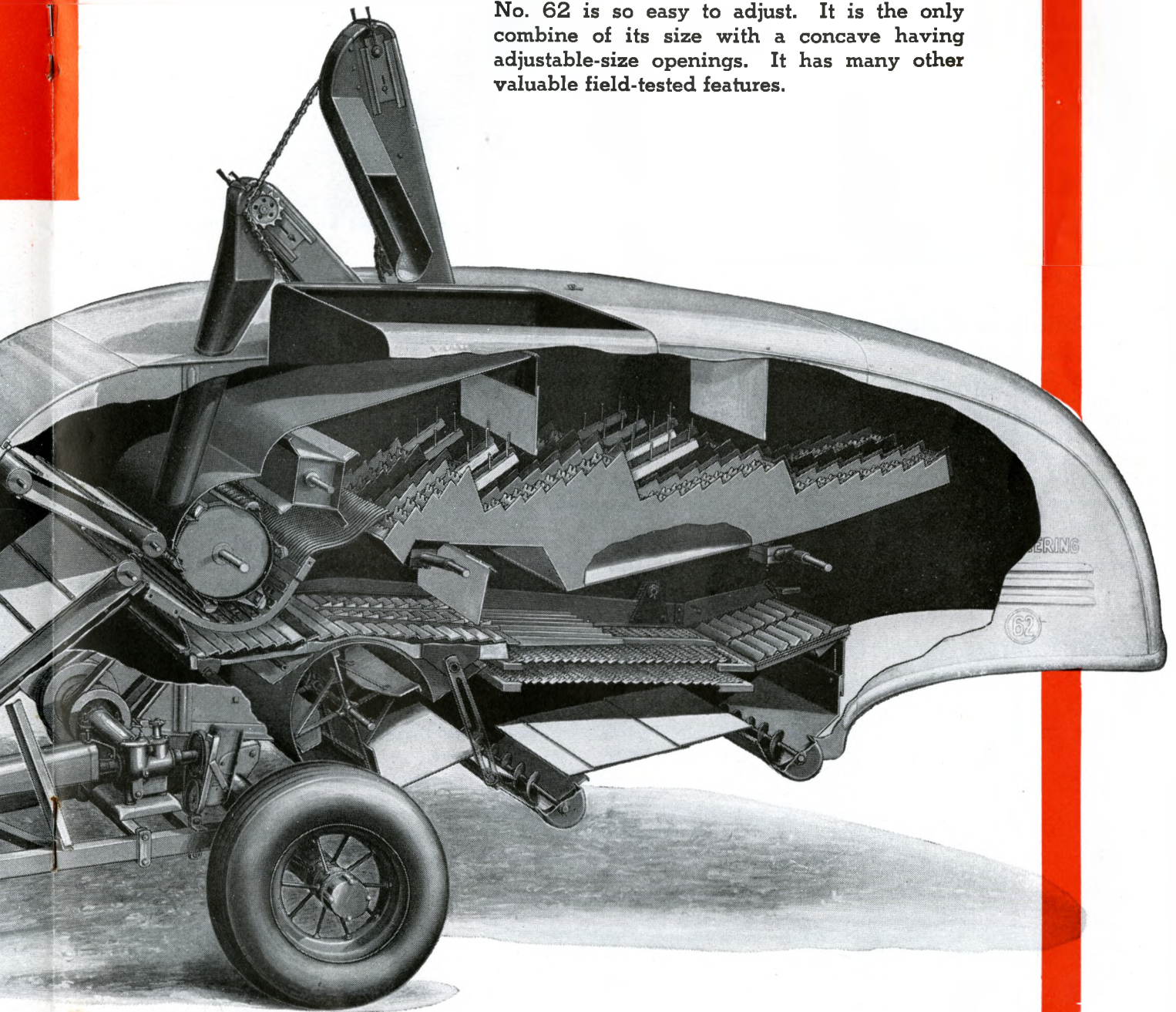
This machine is tops!

**WHEN IT COMES TO SAVING AND
CLEANING THE GRAIN**

McCORMICK-DEERING No. 62 COMBINE



Ownership of the No. 62 harvester-thresher with its full 6-foot cut will help you combine at a minimum of expense. You can harvest all threshable crops when they are ready and save the utmost in grain and seed because the No. 62 is so easy to adjust. It is the only combine of its size with a concave having adjustable-size openings. It has many other valuable field-tested features.



Read this . . . IF YOU

Auger-Scoop Feed

THE auger-scoop feed makes it possible to handle a large volume of straw in a manner that avoids wrapping and bunching, also "down" or tangled crops, with a minimum of difficulty. Material fed to the lower canvas travels up a gentle incline to the cylinder and feeding is further assisted by a revolving feed beater.

The upper canvas strips the grain from the lower canvas in a manner to prevent wrapping and back feeding. It also forces the cut grain directly into the cylinder in a uniform stream over its entire width.

Both lower and upper canvases are fastened by a steel coupling which makes a grain-tight connection without belts or buckles.

Variable Speed Rasp-Bar Cylinder

The all-steel rasp-bar cylinder has ample weight and speed to handle all the material fed into it. The corrugated bars, working in conjunction with the channel bars on the concave, rub the kernels out of the heads to avoid chewing up the straw and allow green material to pass through the cylinder and over the straw rack practically whole.

Clearance between the cylinder and the concave is regulated by a convenient drawbolt adjustment. Since so little time is required for changing cylinder speed the exact amount required to do the best work

can be obtained at all times. This assures cleaner threshing and the utmost saving in grain and seed.

The No. 62 was the first combine to have an adjustable concave that enables the machine to thresh all sizes of seeds without removing and replacing the concave. Thus there are no extra concaves to buy.

Large threshing capacity is obtained with the No. 62 because a large proportion of the grain or seed is separated at the concave and finger grates before it reaches the straw rack. This means that much of the seed is handled only once as the seed separated at the grates moves at once to the rear for cleaning.

Full-Length Grain Pan

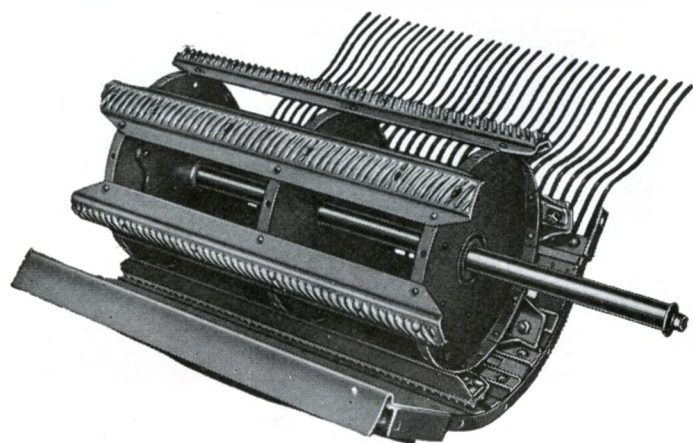
The full-length grain pan receives the grain, chaff, and unthreshed heads which have dropped through the concave openings, and also that material which has dropped through the straw rack onto the return pan. As the grain pan moves back and forth it conveys this material a step at a time toward the chaffer. The grain pan fingers, which extend over the chaffer, help to float out coarse chaff from the grain. This avoids congestion in the front part of the chaffer sieve and enables the air blast to exert a maximum effect, separating the grain from the chaff as soon as the grain leaves the grain pan.



Pickup Attachments

Either a power-driven or ground-driven pickup attachment is available as special equipment. Fingers gently gather the windrowed grain and deliver it over guides to the feeder. This illustration also shows the spiral feed auger. Note that the sides of the platform and feeder are well enclosed so that light fluffy material cannot be blown away.

WANT DETAILED INFORMATION



Rasp-bar variable-speed cylinder with adjustable concave and finger grates.

Shoe Sieve Provides Second Cleaning

Grain and seed threshed by the No. 62 are cleaned first by the chaffer and then by the shoe sieve. The shaking action of the shoe operates in direct opposition to the chaffer so that when the chaffer moves forward the shoe moves to the rear. This provides both increased space and a more vigorous motion to obtain a higher quality sample. It also produces a counterbalanced action to avoid machine vibration.

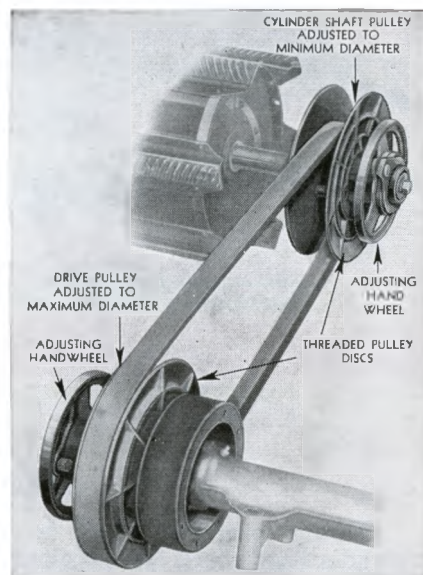
Grain Tank or Bagger

Either a grain tank or bagger can be supplied with the No. 62 combine. The grain tank has a capacity of 25 bushels and its contents are discharged quickly and conveniently by means of an auger. The grain tank is mounted directly over the axle to avoid top-heaviness when the machine is working on sidehills.

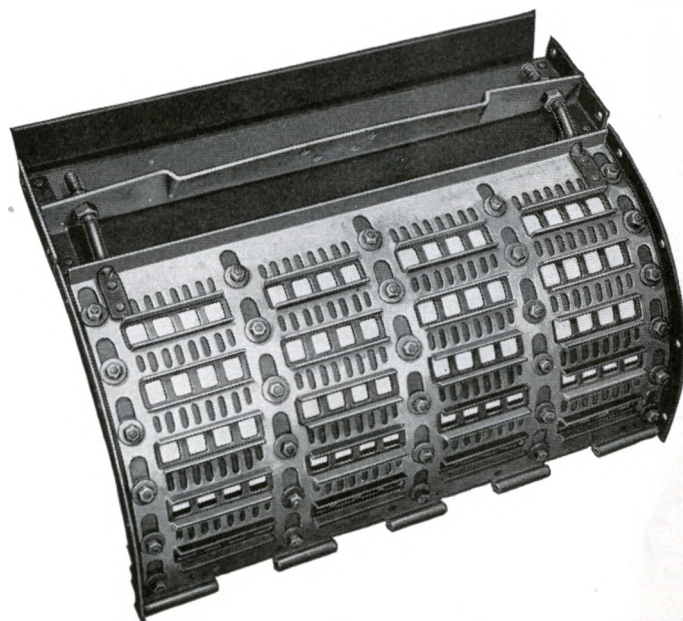
The bagger has a two-way bagging spout which permits filling one sack while the other is being removed and sewed. It is equipped with a dump chute for gently dropping the bags out of the way of the tractor and combine on the next round.

Auxiliary Engine

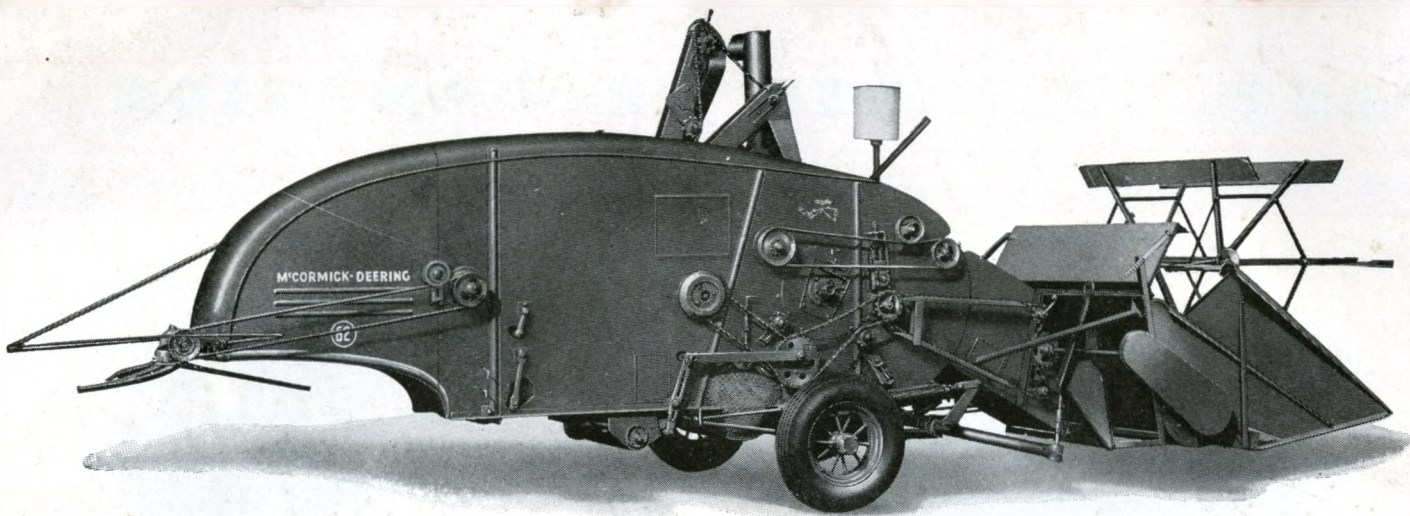
The four-cylinder auxiliary engine, supplied on order, has ample power to operate the mechanism of the No. 62 at constant recommended threshing speeds that are essential to clean work. It is mounted on the A-frame so is accessible for adjustment and inspection. The engine is equipped with an automatic impulse starter, throttle governor, pressure cooling, and air cleaner.



Any cylinder speed from 585 to 1,700 r.p.m. can be obtained simply by turning the hand wheels. For special crops where extremely slow threshing speeds are desirable special pulleys are available which can bring the speed down to 250 r.p.m.



The concave on the No. 62 can be adjusted easily and quickly for combining different crops by changing the size of openings from a minimum of $\frac{3}{32} \times 1$ inch to a maximum size of $\frac{7}{8} \times 1$ inch.



McCormick-Deering No. 62 harvester-thresher with auxiliary engine, special 6-bat reel, supplemental divider, straw spreading attachment, and rubber flax roll attachment.

REGULAR EQUIPMENT

Sliding propeller shaft for tractors with standardized power take-off attachment. Choice of 25-bushel grain tank or bagging platform.

Rasp-bar cylinder and adjustable concave. Adjustable chaffer and shoe. Pneumatic-tired wheels (7.50-16, 8-ply).

SPECIAL EQUIPMENT

Auxiliary engine. Pickup attachments. Hydraulic power platform control. Adjustable reel attachment. Ground-driven reel. Scour-kleen (weed screen) attachment. Supplemental divider. Rubber flax roll attachment. Dual

wheel attachment. High-wheel attachment (7.50-24, 6-ply). Special attachments for threshing peas, beans, flax, lespedeza, bromegrass, etc. Grain sorghum heading attachment. Straw spreader.

SPECIFICATIONS

Cutting Width.....	6 ft.—74½ in. between divider points
Rasp-Bar Cylinder	
Width.....	28 in.
Diameter.....	16 in.
Speed (regular pulley setting).....	585 to 1,700 r.p.m.
Width Overall	
With grain tank.....	11 ft. 1½ in.
With bagger.....	11 ft. 10½ in.
Length Overall (less straw spreader attachment).....	20 ft.
Extreme height.....	9 ft. 3 in.
Approximate Weight	
With grain tank.....	3,100 lb.
With bagger.....	3,000 lb.
Auxiliary engine.....	630 lb.

Specifications Subject to Change Without Notice.

INTERNATIONAL HARVESTER COMPANY

180 NORTH MICHIGAN AVE. CHICAGO 1, ILLINOIS